



# WiFD<sup>2</sup> 31Km LOS Test Report



Location 1: HsinChu NanLiao, Taiwan/ Height of Antenna, 33 meters

Date: Jul.' 29' 2010'  
No.: BA201007HC006

Location 2: MiaoLi Cape of Good Hope, Taiwan/ Height of Antenna, 52 meters

Distance: 31.8Km

Test Device: KWA-O1800 x2

External 5GHz 30 dBi Antenna

Date:

Jul.'29' 2010' 10 AM

Weather: Cloudy & Drizzle



Fly to Anywhere™





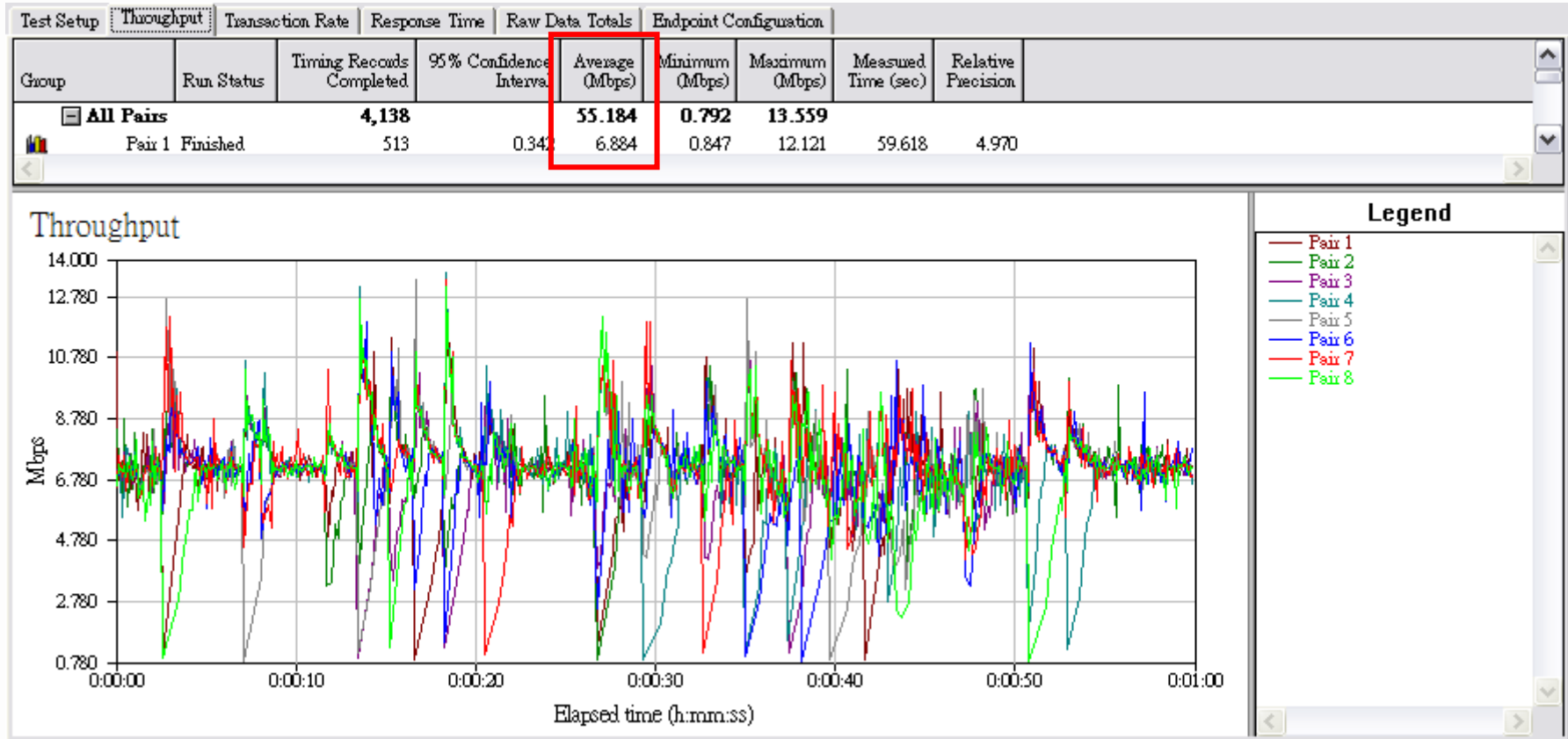
Location in HsinChu NanLiao



Location in MiaoLi Cape of Good Hope

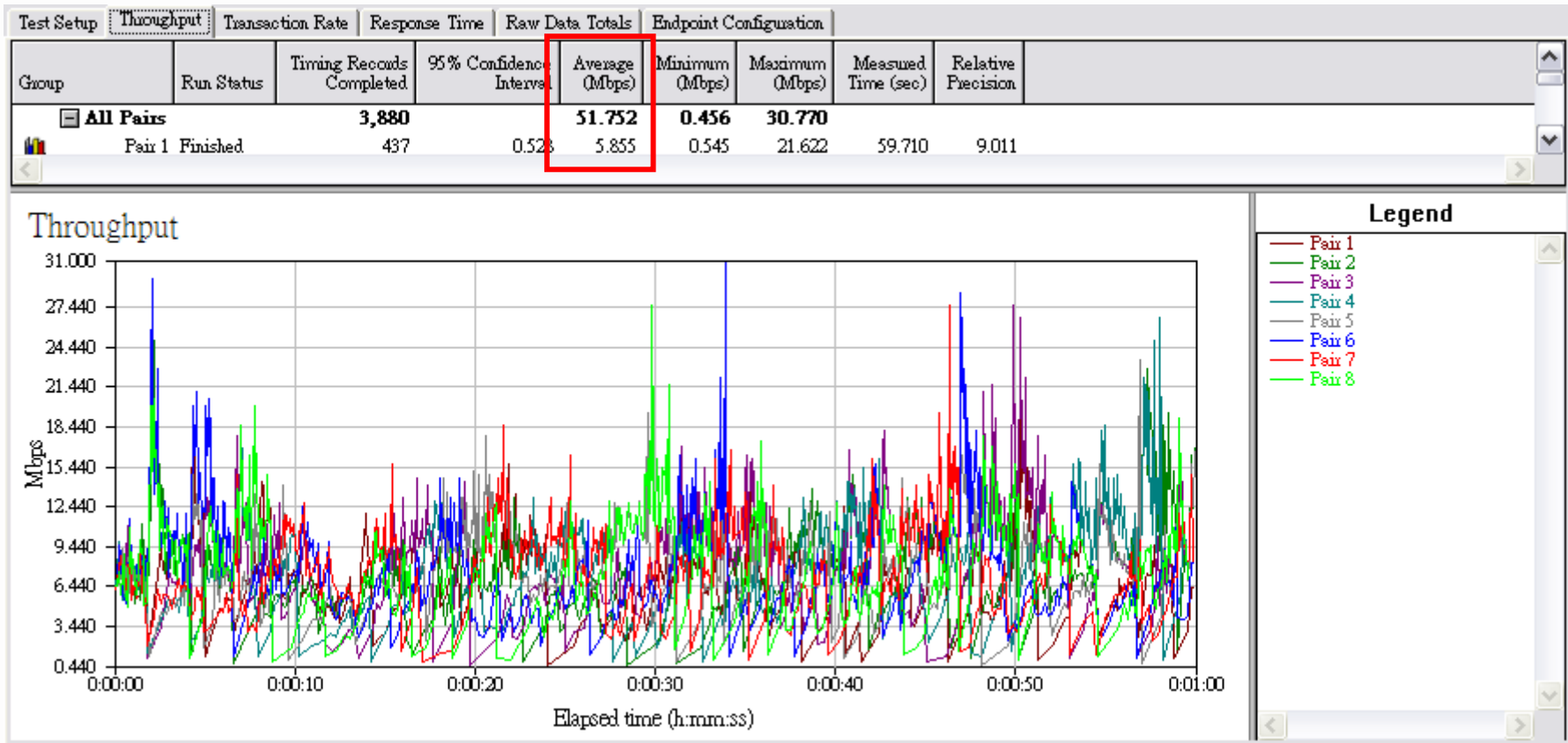
# Uplink Test Result

Channel Bandwidth: 40MHz  
 Channel: 5745MHz / 5805MHz  
 Modulation: 16QAM 3/4  
 Throughput: 55.184 Mbps



# Downlink Test Result

Channel Bandwidth: 40MHz  
 Channel: 5745MHz / 5805MHz  
 Modulation: 16QAM 3/4  
 Throughput: 51.752 Mbps

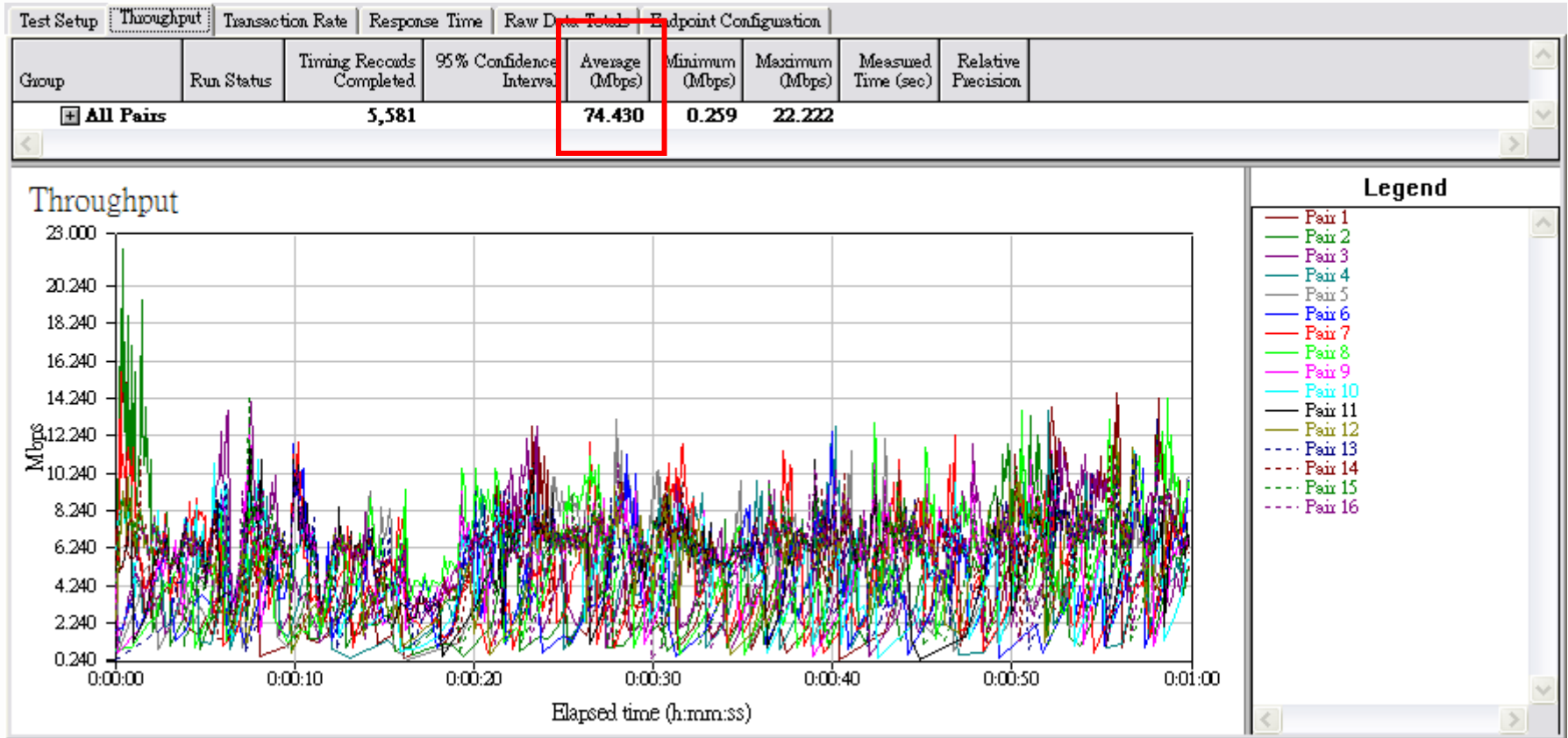




# Two Way Test Result



Channel Bandwidth: 40MHz  
Channel: 5745MHz / 5805MHz  
Modulation: 16QAM 3/4  
Throughput: 74.430 Mbps



Fly to Anywhere™

