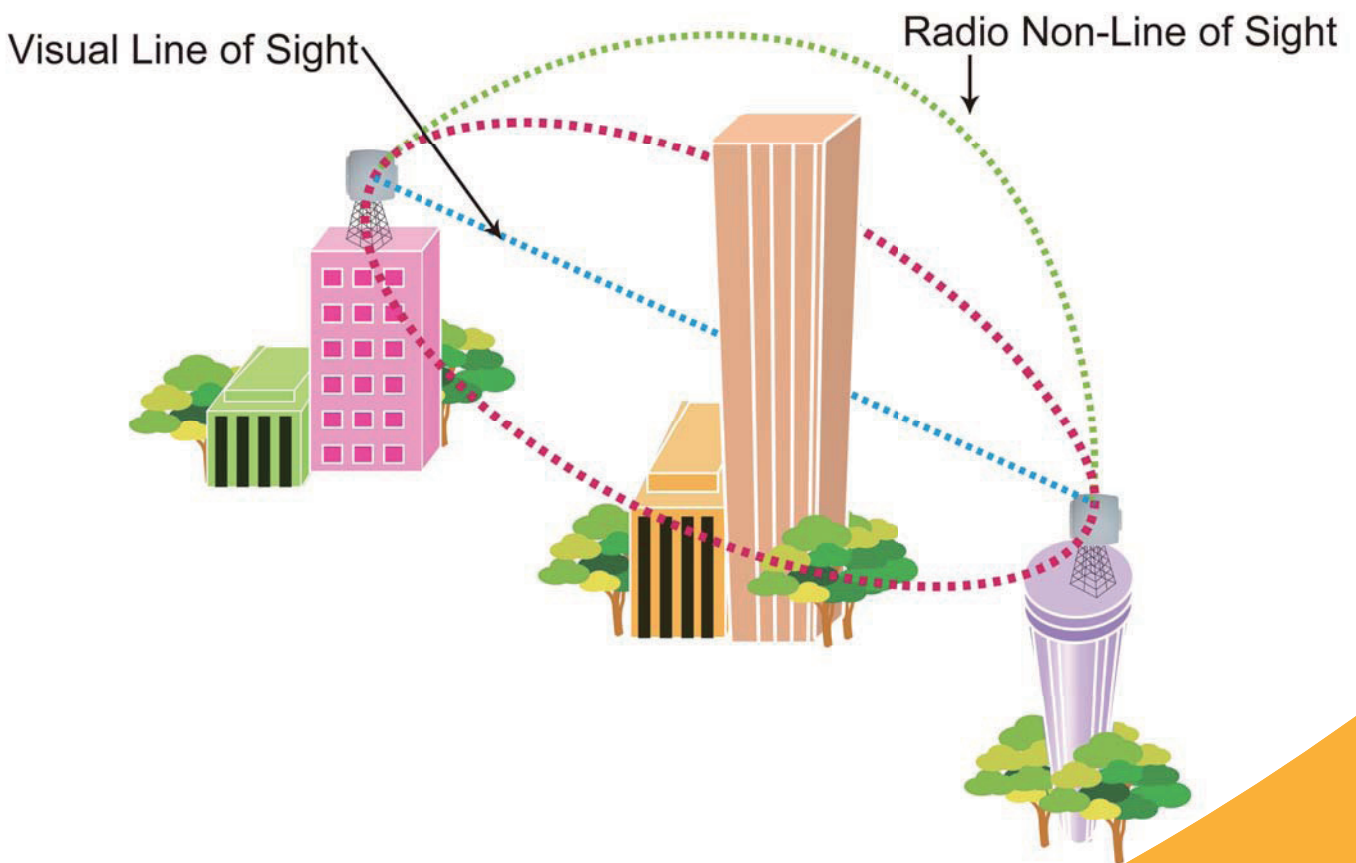


KW9000 Series

NLOS 54Mbps Outdoor Bridge 900MHz / 2.4GHz / 5.8GHz

KW9000 Series Pre-WiMAX Outdoor Bridges are designed for Point to Point and Point to multi-Point outdoor application especial for NLOS. These bridges with functions of PoE power supply, waterproof, dustproof and coolant can build up a 54Mbps connection between two buildings. Such marvelous products are so suitable to be set up outdoors.

These products supporting further powerful and stabile functions are fully compatible with IEEE 802.11a/b/g standard and also support 900MHz Frequency Band. Web or SNMP can be your choice to manage these bridges. No doubt, KW9000 Series Pre-WiMAX Outdoor Bridges are the best devices for your inter-building network bridge since its special design.





KWA-O9000-I



KWG-O9000-I



KWN-O9000
KWA-O9000
KWG-O9000

Model	KWN-O9000	KWG-O9000	KWG-O9000-I	KWA-O9000	KWA-O9000-I
HARDWARE					
CPU / Memory	IXP 422 266MHz / 8MB Flash + 32MB SDRAM				
LAN	1 x 10/100BaseT RJ-45 with Auto-MDIX				
Power Over Ethernet (POE)	Yes (802.3af)				
Enclosure	Metal and Plastic PC Case, IP 67 Verified				
Default Button	Yes				
RADIO					
Antenna	N Type	N Type	Build-in 19 dBi	N Type	Build-in 23 dBi
Frequency	900MHz	2.4GHz	2.4GHz	5GHz	5GHz
Maximum Output Power	17dBm @ 54Mbps	21dBm @ 54Mbps	21dBm @ 54Mbps	20dBm @ 54Mbps	20dBm @ 54Mbps
Sensitivity	-65dBm @ 54Mbps	-72dBm @ 54Mbps	-72dBm @ 54Mbps	-70dBm @ 54Mbps	-70dBm @ 54Mbps
FEATURE					
Operating Mode	AP, Point to Point, CPE				
Channel Bandwidth	5MHz, 10MHz, 20MHz				
Data Bandwidth Control	Yes				
Data Enhanced Mode	Yes (Regatta Mode)				
SECURITY					
WEP Encryption	64, 128, 152-bit				
QoS /TDM	Yes				
Wireless Isolation	Yes				
Enable/Disable SSID Broadcast	Yes				
MANAGEMENT					
Web Base Management	Yes				
SSH Security	Yes				
PHYSICAL					
Dimension	259×250×75 mm	259×250×75 mm	335×335×81 mm	259×250×75 mm	335×335×81 mm
Weight	1.8 Kg	1.8 Kg	2.9Kg	1.8 Kg	2.9Kg
Operating Temperature	-20 ~ 60C				
Operating Humidity	10 ~ 95% RH				