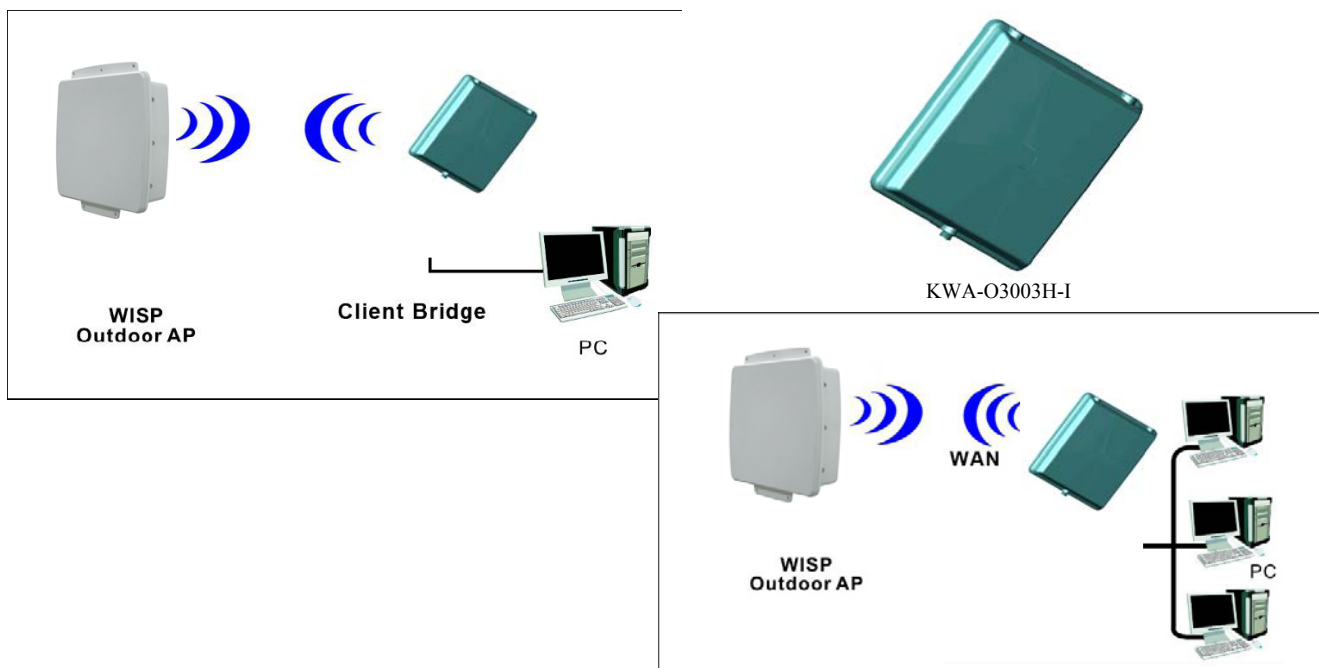


## KWA-O3003H-I 802.11 a Outdoor AP/Bridge

- Compliant with IEEE802.11a standard
- RoHS compliant
- WEP, WPA-PSK(TKIP , AES), WPA2 Security
- Operation Modes: Access Point, Client Bridge, Client Router

KWA-O3003H-I is a long range outdoor wireless Access Point / Client Bridge that operates in 5GHz frequency. It provides high bandwidth up to 108Mbps with Super Mode (Super A) and features high transmitted output power as well as superior sensitivity. KWA-O3003H-I extends radio coverage, avoids unnecessary roaming between Access Points and ensures a stable wireless connection while reduces the number of required equipments.



**KWA-O3003H-I**

<b>HARDWARE</b>	
CPU	AR2313
FLASH	8Mbyte
SDRAM	32Mbyte
LAN	1 x 10/100BaseT RJ-45 with Auto-MDIX
Power Over Ethernet	Yes (12V / 1A)
<b>PHYSICAL</b>	
Antenna	23 dBi Patch Antenna
Enclosure	ABS, UV resistant
Maximum Output Power	23 dBm @ 5GHz
Sensitivity	- 92 dBm @ 5GHz
Dimension	371.9 (L) x 341.9 (W) x 63.5 (H) mm
Weight	3 Kg
<b>ENVIRONMENT</b>	
Operating Temperature	-20 ~ 70C
Storage Temperature	-30 ~ 80C
Storage Humidity	0 ~ 95% RH
<b>FEATURE</b>	
Operation Modes	AP mode, Client Bridge and Client Router
QoS (WMM)	Yes
Radio Modes	Standard 802.11a Mode
<b>SECURITY</b>	
User Logon	Yes
WEP Encryption	64, 128, 152-bit
Wireless MAC Access Control List	Yes
Hide SSID Broadcast	Yes
802.1x Support	Yes
WPA	WPA/WPA2 Enterprise/WPA-PSK
<b>MANAGEMENT</b>	
Web Base Management	Yes
HTTP F/W Upgrade	Yes
Save & Load Configurations	Yes
<b>WARRANTY</b>	
12 months	

*Fly to Anywhere™*





### Electrical Specifications:

Frequency Range : 4.9 ~ 5.9GHz

VSWR :  $\leq 2.0$

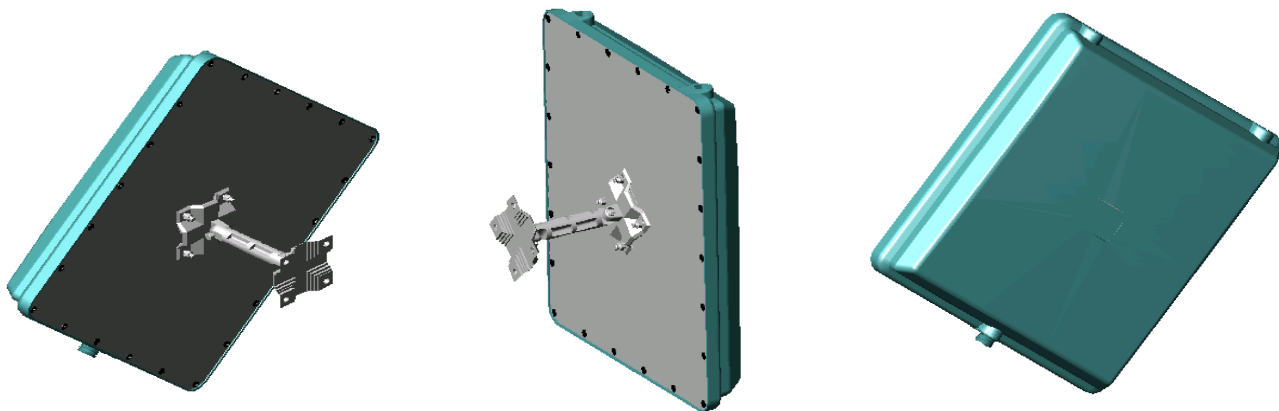
Impedance :  $50 \Omega \pm 5 \Omega$

Gain : 23dBi

Polarization : Vertical

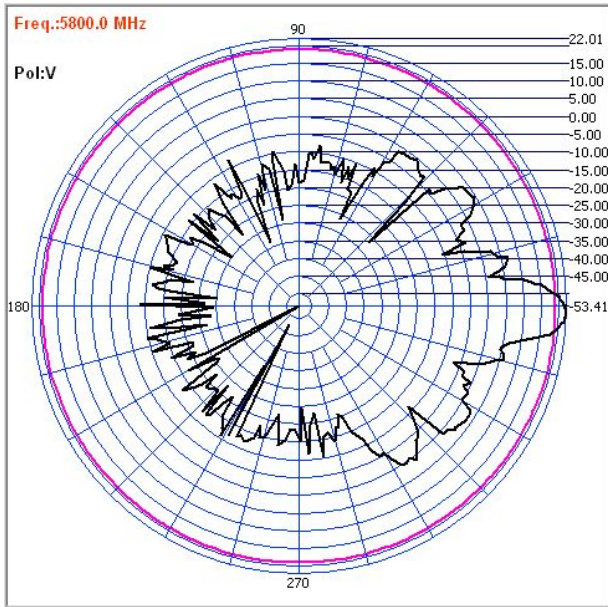
Power Handling : 10 Watt

Beam Width : H:  $11.4^\circ$  / E:  $10.6^\circ$

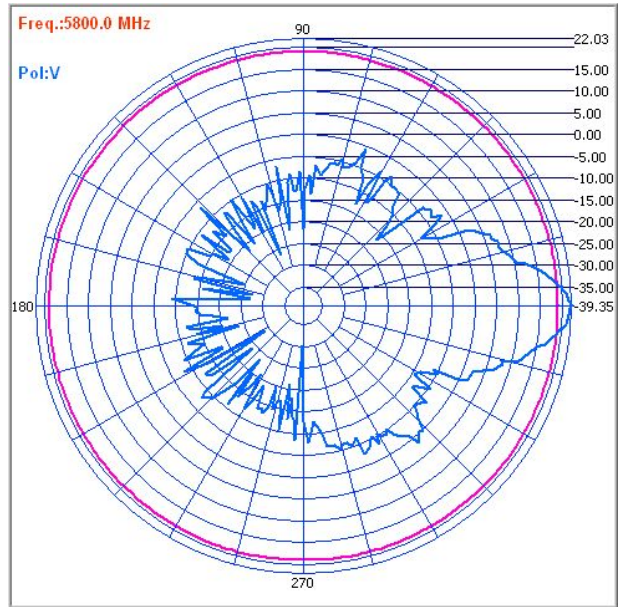


*Fly to Anywhere™*

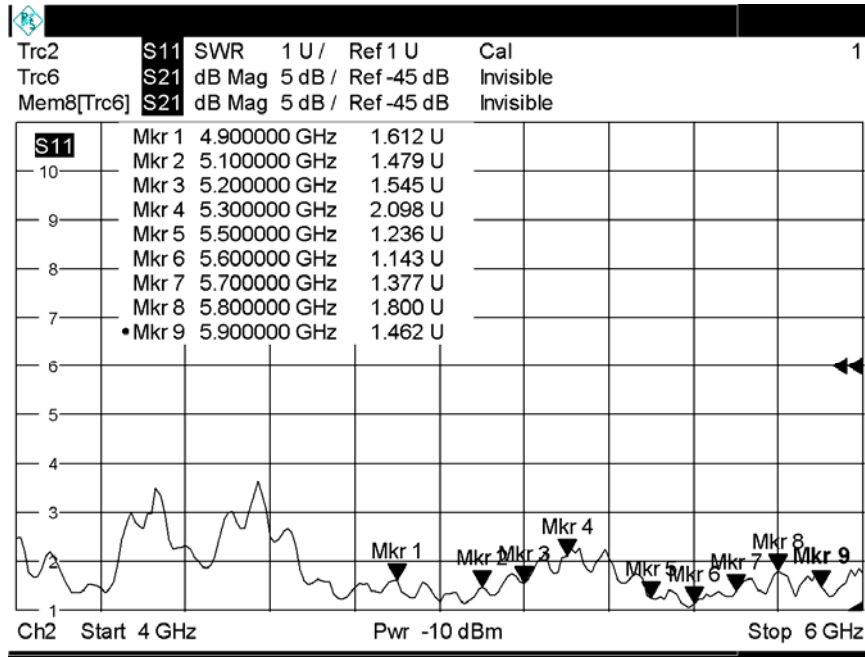
**WNet**  
Green Network™



H Plane



E Plane



Date: 4.SEP.2008 04:31:42

### SWR