

KWA-O6020-I MIMO 300Mbps Outdoor Bridge

4.9~6.0 GHz

Formosa KWA-O6020-I Wireless MIMO Bridge provides reliable and predictable Wireless Bridge Connection or Wi-Fi Coverage.

With these wireless access points you can:

Augment throughput for high-bandwidth wireless applications

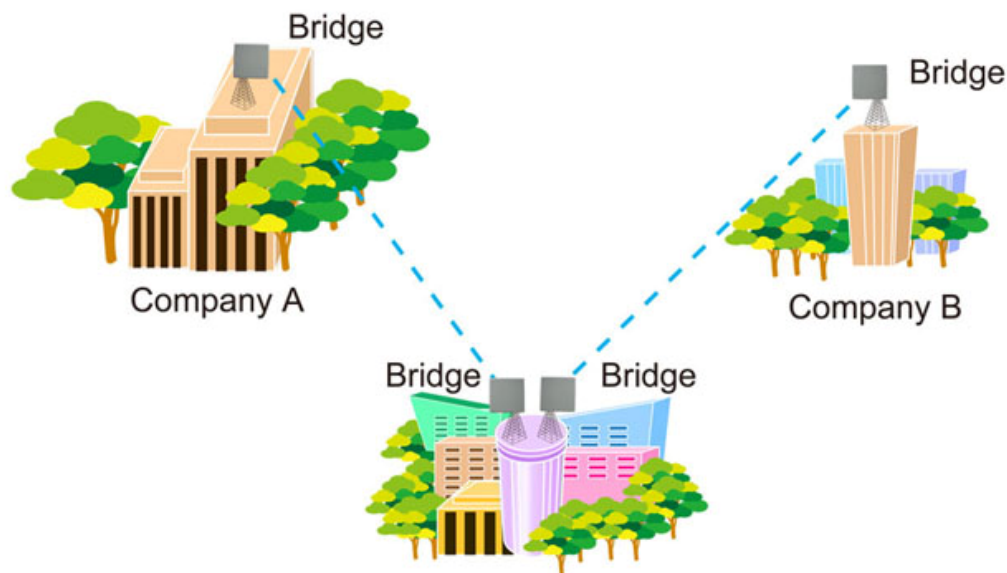
Protect your investment in wireless networking

Increase network reliability for high bandwidth applications

Data rates of 300 Mbps

Multiple input, multiple output technology for enhanced reliability

5GHz radio module



TOUCH AND CONNECT!TM

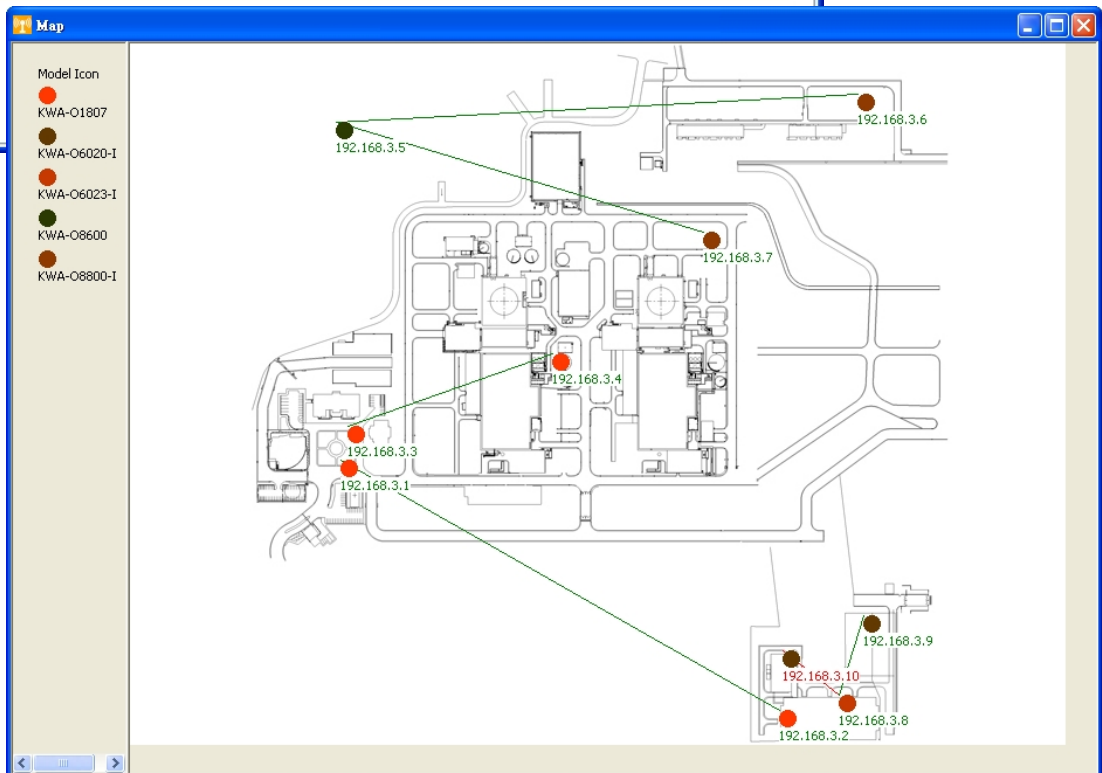
WNetTM
Green NetworkTM

WiVIEW 2, Managed Tool

WiVIEW 2011 - Bridge Vision

File Bridge Map Log Alarm About

| No | Status | Model Name | IP Address | Location | Routing | Description |
|----|--------|-------------|--------------|----------|--------------------------|-------------|
| 1 | ● | KWA-O1807 | 192.168.3.1 | GAB | 192.168.3.2 | WIFDD |
| 2 | ● | KWA-O1807 | 192.168.3.2 | ECB | 192.168.3.1 | WIFDD |
| 3 | ● | KWA-O1807 | 192.168.3.3 | GAB | 192.168.3.4 | WIFDD |
| 4 | ● | KWA-O1807 | 192.168.3.4 | RB#1 | 192.168.3.3 | WIFDD |
| 5 | ● | KWA-O8600 | 192.168.3.5 | Tower | 192.168.3.6;192.168.3.7 | BS |
| 6 | ● | KWA-O8800-I | 192.168.3.6 | 161KV | 192.168.3.5 | CPE |
| 7 | ● | KWA-O8800-I | 192.168.3.7 | AFB | 192.168.3.5 | CPE |
| 8 | ● | KWA-O6023-I | 192.168.3.8 | ECB | 192.168.3.10;192.168.3.9 | BS |
| 9 | ● | KWA-O6020-I | 192.168.3.9 | CWPH | 192.168.3.8 | CPE |
| 10 | ● | KWA-O6020-I | 192.168.3.10 | RBSWPH | 192.168.3.8 | CPE |



Bridge Location on the MAP

| Specification | |
|---------------------------|---|
| HARDWARE | |
| Memory | 8MB Flash + 32MB SDRAM |
| LAN | 2 x 10/100BaseT RJ-45 with Auto-MDIX |
| Power Over Ethernet (POE) | Yes (15-18V PTE) |
| PoE Out | 12-15V PTE |
| Enclosure | Plastic PC Case, IP 55 Verified |
| Default Button | Yes |
| LED | Power / RSSI / LAN |
| Ground | Yes |
| Power Requirements | 15V PoE |
| RADIO | |
| Wireless | OFDM |
| Output Power | 26dBm@6Mbps / 21dBm@54Mbps / 26dBm@HT20 / 25dBm@HT40 |
| Sensitivity | -90dBm@11Mbps / -76dBm@54Mbps / -70dBm@HT20 / -66dBm@HT40 |
| Antenna | Build-in 2x2 14-16 dBi |
| FEATURE | |
| Operating Mode | AP, Bridge, CPE |
| Channel Bandwidth | 5 / 10 / 20 / 40 MHz |
| Data Bandwidth Control | Yes |
| Output Power Management | Yes (Full, Half, Quarter, Eighth, Min.) |
| Max. Client Setting | Yes |
| Transparent CPE | Yes, LAN to LAN |
| TDM Coordination | Yes |
| NAT | Yes |
| VLAN | Yes, Up to 16 VAP |
| GPS Coordination | Yes |
| RF Scheduling | Yes (Control Radio on/off) |
| Spanning Tree | Yes (802.1d) |
| RTS Threshold Setting | Yes (0-2,346) |
| Fragmentation Setting | Yes (256-2,346) |
| Beacon Interval Setting | Yes (20-1,000) |
| DTIM Interval Setting | Yes (1-255) |

| SECURITY | |
|-----------------------|--------------------------------------|
| MAC Control | Yes |
| WEP Encryption | 64, 128, 152-bit |
| WPA / WPA2 | Yes |
| Wireless Isolation | Yes |
| Hidden SSID | Yes |
| Firewall | Yes |
| VPN | VPN Pass-through (IPsec, L2TP, PPTP) |
| MANAGEMENT | |
| Web Base Management | Yes |
| Console | Yes |
| SNMP V.2 | Private MIB, 802.11 MIB |
| Support Time Server | Yes |
| Support Log Server | Yes |
| PHYSICAL | |
| Operating Temperature | -20 ~ 70C |
| Operating Humidity | 10 ~ 95% RH |
| Weight | 0.6Kg |
| Dimension | 111 x 255 x 48 mm |



Antenna Specification

| NO | Items | Specifications |
|----|--|--|
| 1 | Antenna Shape | Patch Array |
| 2 | Antenna Dimensions | L170 x W92 x T0.75 mm |
| 3 | Antenna Material | FR4 |
| 4 | RF Frequency Band | 4.9~5.9 GHz |
| 5 | Power Handling | 2 w |
| 6 | Impedance | 50 Ω |
| 7 | Return Loss | Less than -10 dB |
| 8 | Isolation | Less than -20 dB |
| 9 | Polarization | Dual Polarization (Vertical and Horizontal) |
| 10 | Antenna Gain (Exclusive of Cable Loss 0.5 dB) | Vertical Port Peak Gain : 13.9 dBi Horizontal Port Peak Gain : 15 dBi |
| 11 | Vertical Port HPBW | (YZ Plane /H-Plane) : 36° (XZ Plane /E-Plane) : 15° |
| 12 | Horizontal Port HPBW | (YZ Plane /E-Plane) : 38° (XZ Plane /H-Plane) : 17° |
| 13 | Front to Back Ratio | Vertical Port : 30 dB Horizontal Port : 20 dB |
| 14 | Operating Temperature | -30°C ~ +80°C |