

KWG-O6021-I MIMO 150Mbps Outdoor Bridge 2.4GHz

Formosa KWG-O6021-I Wireless MIMO Bridge provides reliable and predictable Wireless Bridge Connection or Wi-Fi Coverage.

With these wireless access points you can:

Augment throughput for high-bandwidth wireless applications

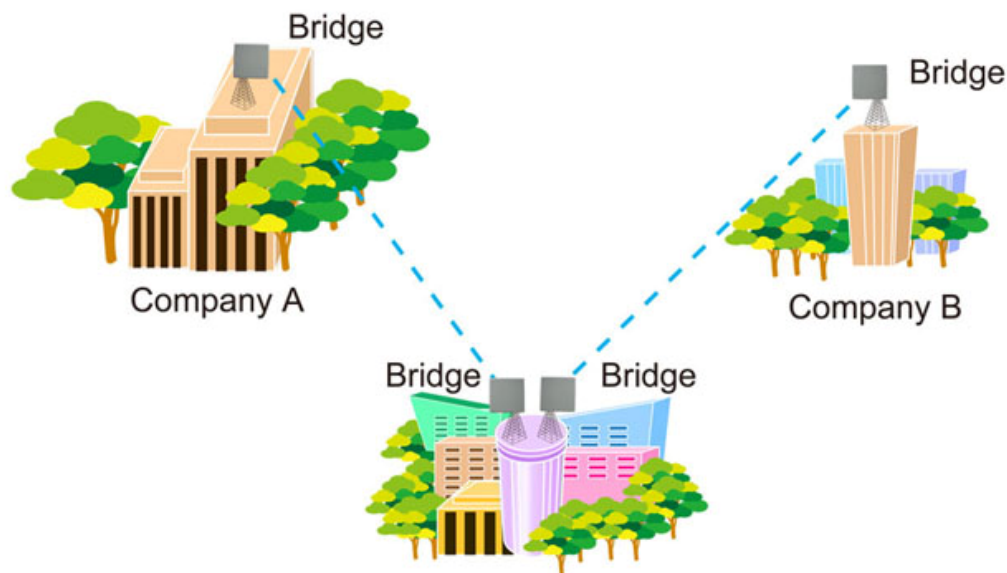
Protect your investment in wireless networking

Increase network reliability for high bandwidth applications

Data rates of 150 Mbps

Multiple input, multiple output technology for enhanced reliability

2.4GHz radio module



TOUCH AND CONNECT![™]

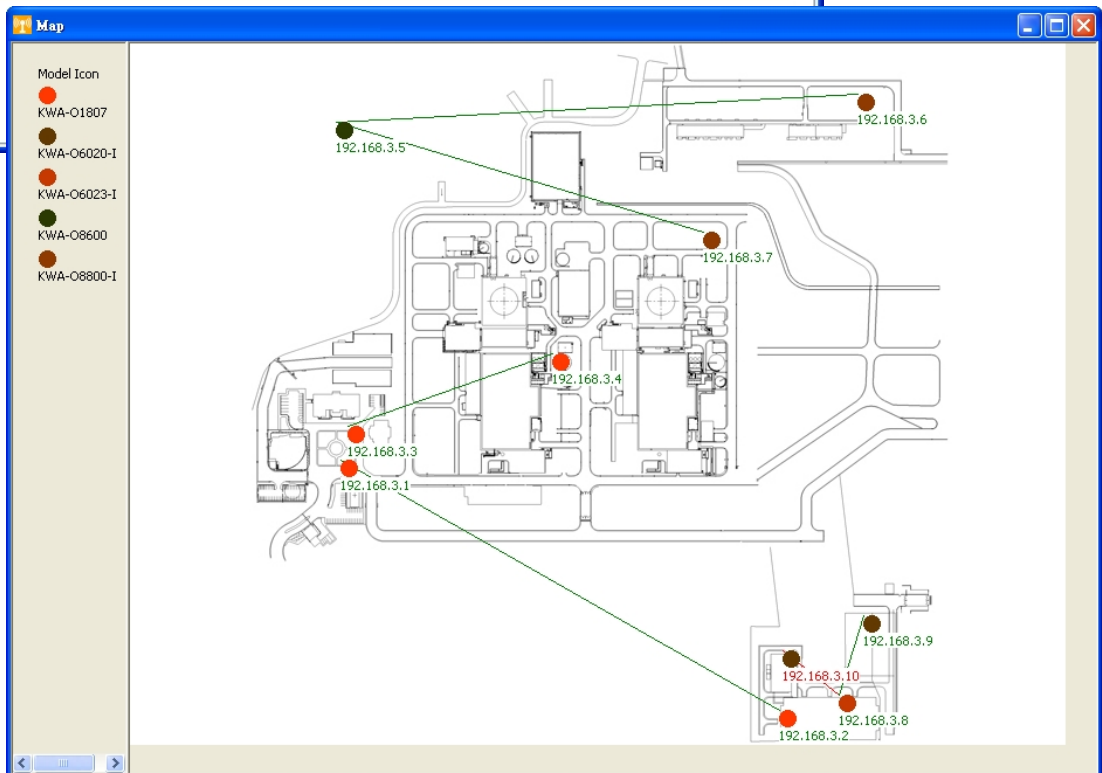
WNet[™]
Green Network[™]

WiVIEW 2, Managed Tool

WiVIEW 2011 - Bridge Vision

File Bridge Map Log Alarm About

No	Status	Model Name	IP Address	Location	Routing	Description
1	●	KWA-O1807	192.168.3.1	GAB	192.168.3.2	WIFDD
2	●	KWA-O1807	192.168.3.2	ECB	192.168.3.1	WIFDD
3	●	KWA-O1807	192.168.3.3	GAB	192.168.3.4	WIFDD
4	●	KWA-O1807	192.168.3.4	RB#1	192.168.3.3	WIFDD
5	●	KWA-O8600	192.168.3.5	Tower	192.168.3.6;192.168.3.7	BS
6	●	KWA-O8800-I	192.168.3.6	161KV	192.168.3.5	CPE
7	●	KWA-O8800-I	192.168.3.7	AFB	192.168.3.5	CPE
8	●	KWA-O6023-I	192.168.3.8	ECB	192.168.3.10;192.168.3.9	BS
9	●	KWA-O6020-I	192.168.3.9	CWPH	192.168.3.8	CPE
10	●	KWA-O6020-I	192.168.3.10	RBSWPH	192.168.3.8	CPE



Bridge Location on the MAP

Specification	
HARDWARE	
Memory	8MB Flash + 32MB SDRAM
LAN	1 x 10/100BaseT RJ-45 with Auto-MDIX
Power Over Ethernet (POE)	Yes (802.3af)
Enclosure	Metal and Plastic PC Case, IP 67 Verified
Default Button	Yes
LED	4 LEDs, Status / Power / Wireless / LAN
Ground	Yes
Ethernet Lighting Protector	Integrated inside PoE Injector
Power Requirements	802.3af PoE 48Vdc @0.5A / 100~240 Vac, 50/60 Hz
RADIO	
Wireless	OFDM / CCK
Output Power	27dBm@11Mbps / 26dBm@54Mbps / 23 dBm@HT20, HT40
Sensitivity	-90dBm@11Mbps / -76dBm@54Mbps / -73dBm@HT20 / -70dBm@HT40
Antenna	Build-in 19 dBi + N Connector (Switchable by Software)
FEATURE	
Operating Mode	AP, Bridge, CPE
Channel Bandwidth	20MHz, 40MHz
Data Bandwidth Control	Yes
Output Power Management	Yes (Full, Half, Quarter, Eighth, Min.)
Max. Client Setting	Yes
RF Scheduling	Yes (Control Radio on/off)
Spanning Tree	Yes (802.1d)
RTS Threshold Setting	Yes (0-2,346)
Fragmentation Setting	Yes (256-2,346)
Beacon Interval Setting	Yes (20-1,000)
DTIM Interval Setting	Yes (1-255)

SECURITY	
MAC Control	Yes
WEP Encryption	64, 128, 152-bit
WPA / WPA2	Yes
Wireless Isolation	Yes
Hidden SSID	Yes
Firewall	Yes
VPN	VPN Pass-through (IPsec, L2TP, PPTP)
MANAGEMENT	
Web Base Management	Yes
Console	Yes
SNMP V.2	Private MIB, 802.11 MIB
Support Time Server	Yes
Support Log Server	Yes
PHYSICAL	
Operating Temperature	-20 ~ 80C
Operating Humidity	10 ~ 95% RH
Weight	2.9Kg
Dimension	335 x 335 x 81 mm

