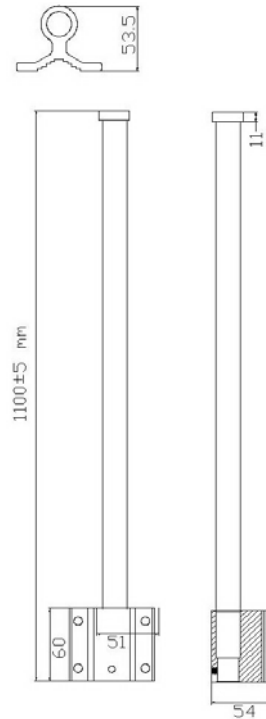


DATA SHEET

Model No. : ANT04-0502PC
Description : 420 ~ 450 MHz OMNI ANTENNA
Date : 2013/05/03
Rev : 1

1. OVERVIEW & SPECIFICATIONS

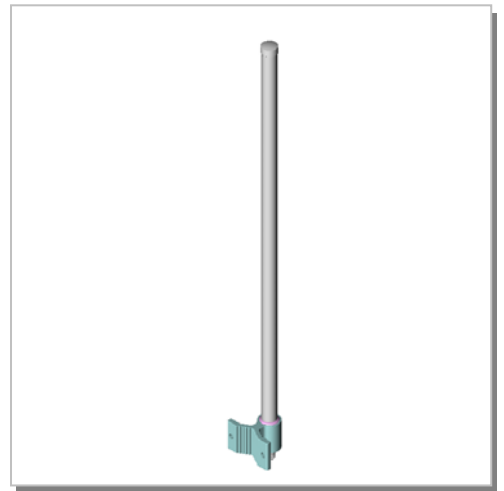
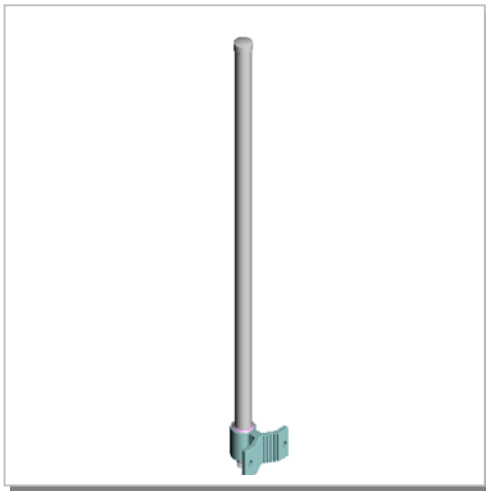


Electrical Specifications:

Frequency Range :	420 ~ 450 MHz
VSWR :	≤ 3.0
Impedance :	50Ω ± 5Ω
Gain :	3 ~ 5 dBi
Polarization :	Vertical
Power Handling :	10 Watt
Beam Width :	H: 360° / E: 29.7°

Mechanical Specifications:

Connector :	N Female
Operation Temp. :	-30°C ~ +60°C
Material :	Radome: Fiberglass Base: Aluminum Alloy
Dimension (L*W*H) :	Ø30*1100 mm
Weight :	480g ±10g (w/ mount)
Color :	White



2. RADIATION PATTERN

H-PLANE

