

Omni-Directional Antenna for 2.4 GHz

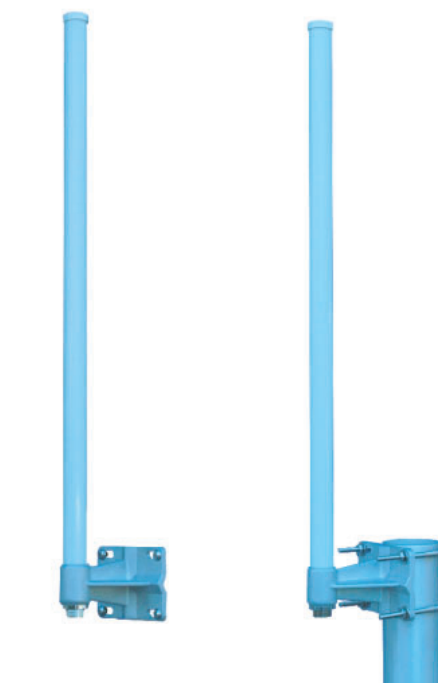
Preliminary

0.1

ANT24-0800N

Electrical Specification

Frequency range	2400 MHz - 2500 MHz
Gain	8.0 dBi
VSWR	2.0 : 1 Max.
Polarization	Linear, vertical
HPBW / horizontal	360°
HPBW / vertical	15°
Power Handling	50W
Impedance	50 Ohms
Connector	N female
Front to back	15dB



Environmental & Mechanical Characteristics

Survival wind speed	216 km/hr
Temperature	- 40°C to +80°C
Humidity	95% @ 25° C
Lightning protection	DC ground
Radome color	Gray-white
Radome material	Fiber glass
Weight	337 gw
Dimensions	590 x Ø19 mm

