



DATA SHEET

Model No. : ANT24-1214PC
Description : 2.4~2.5 GHz DUAL POLARIZATION
SECTOR ANTENNA
Date : 2010/03/16
Rev : 4

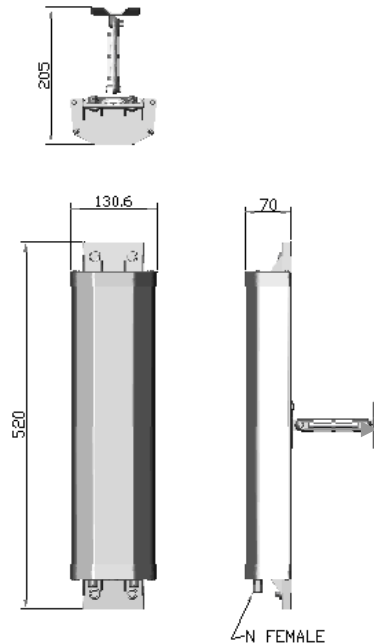
1/16

Fly to Anywhere™

FORMOSA
Wireless Systems Corp.



1. OVERVIEW & SPECIFICATIONS



Electrical Specifications:

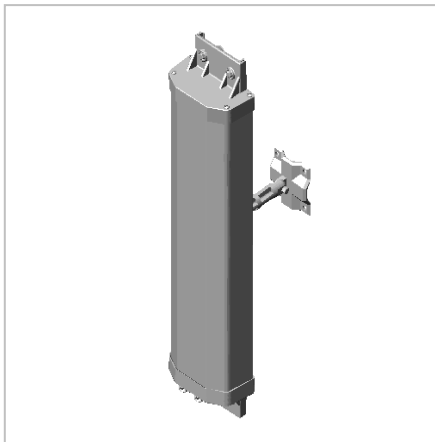
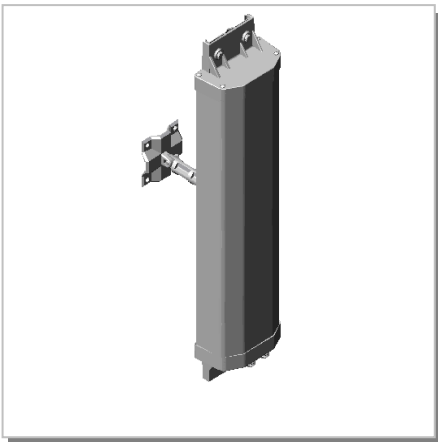
Frequency Range :	+ 45° Polarization: 2.4~2.5 GHz - 45° Polarization: 2.4~2.5 GHz
VSWR :	≤ 2.0
Isolation :	20 dB (min.)
Impedance :	$50\Omega \pm 5\Omega$
Gain :	12 dBi / 12 dBi
Polarization :	+45° / -45° Polarization

Mechanical Specifications:

Connector :	N Female
Operation Temp. :	-30°C ~ +60°C
Material :	Radome: ABS Mount: Zinc Alloy & Alumimium Alloy
Dimension (L*W*H) :	520*130.6*70 mm
Weight :	850 \pm 20g (w/ mount)
Color :	Cool Gray 1C



3D Illustration





2. TESTING CONDITION

2.1 TEST SETUP

VSWR measurement (S11): Use ROHDE & SCHWARZ ZV8 Network Analyzer with Harbour RG-142 coaxial cable: 1000mm length in free space.

2.1.1 VSWR

The table as below summarizes concern about Return loss measurement according to The frequency band is based on FWS design. The detail be shown as appendix that is from ROHDE & SCHWARZ ZV8 Network Analyzer

+ 45° Polarization : VSWR Performance			
Freq(MHz)	2400	2450	2500
Free space	1.4	1.01	1.55

- 45° Polarization : VSWR Performance			
Freq(MHz)	2400	2450	2500
Free space	1.41	1.08	1.47

2.1.2 ISOLATION MEASUREMENT

The isolation of the dual polarization antenna was measured by ROHDE & SCHWARZ ZV8 Network Analyzer. The way to measured isolation is connect output ports and the other ports mount with 50 ohm matches respectively. The table as below summarizes concern about isolation measurement according to The frequency band is based on FWS design.

Isolation Performance			
Freq(MHz)	2400	2450	2500
Free space	-21.94	-24.75	-22.84

3. GAIN MEASUREMENT



3.1 TEST SETUP

The gain of the antenna was measured by **FWS** Chamber. The chamber provides less than -30 dB reflectivity from 800 MHz through 6 GHz and a 60cm diameter spherical quiet zone. The measurement results are calibrated using both **SCHWARZBECK** horn standards. A decoupling sleeve is used to reduce feed line radiation

3.2 TEST RESULT

The peak gain is picked up as table list from Network analyzer in Chamber room, the completely gain plots also be shown as appendix.

+ 45° Polarization : Peak Gain (dBi) / Beam width(°)			
Freq(MHz)	2400	2450	2500
H PLANE	11.15/82.20°	13.03/81.20°	12.93/83.60°
E PLANE	10.39/20.10°	12.58/19.90°	12.17/18.00°

- 45° Polarization : Peak Gain (dBi) / Beam width(°)			
Freq(MHz)	2400	2450	2500
H PLANE	11.34/88.00°	12.69/89.00°	12.79/90.10°
E PLANE	10.49/19.80°	12.99/20.90°	12.01/19.10°

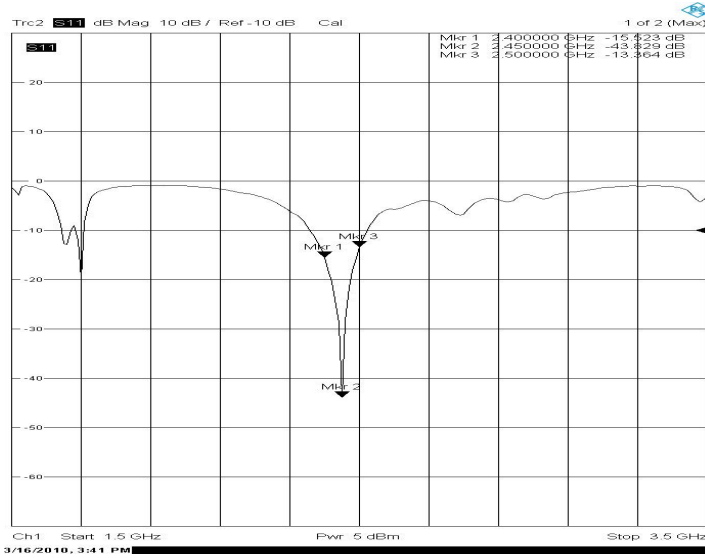


4. APPENDIX

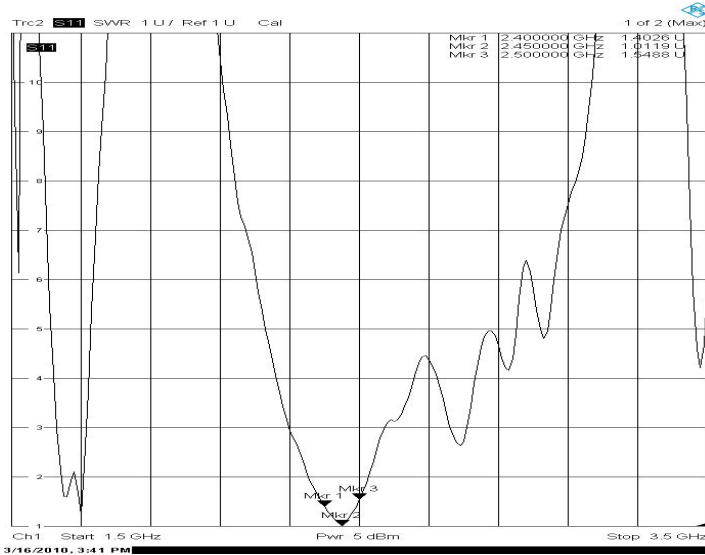
4.1 RETURN LOSS & VSWR

+ 45° Polarization:

RETURN LOSS



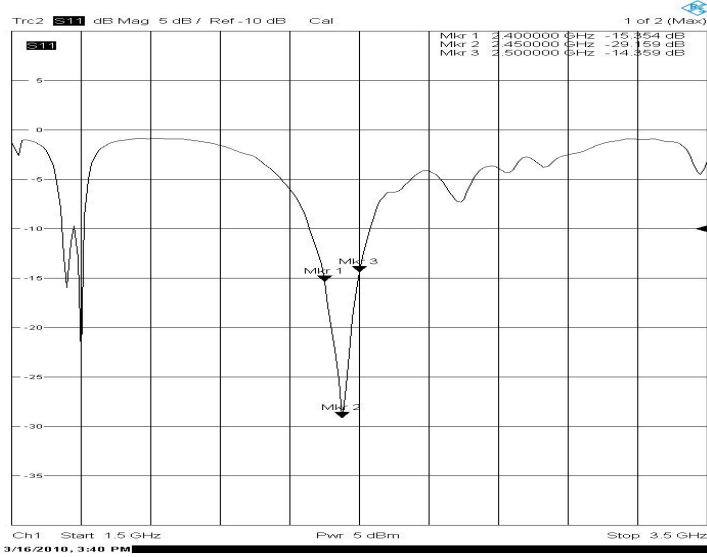
SWR



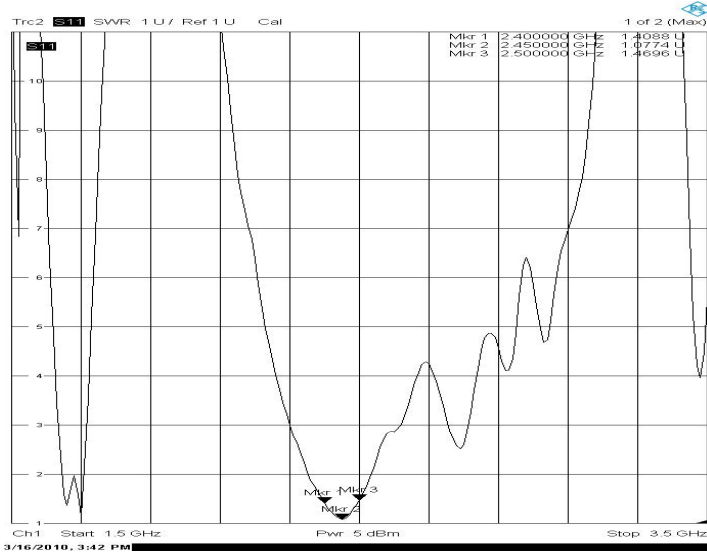


- 45° Polarization :

RETURN LOSS

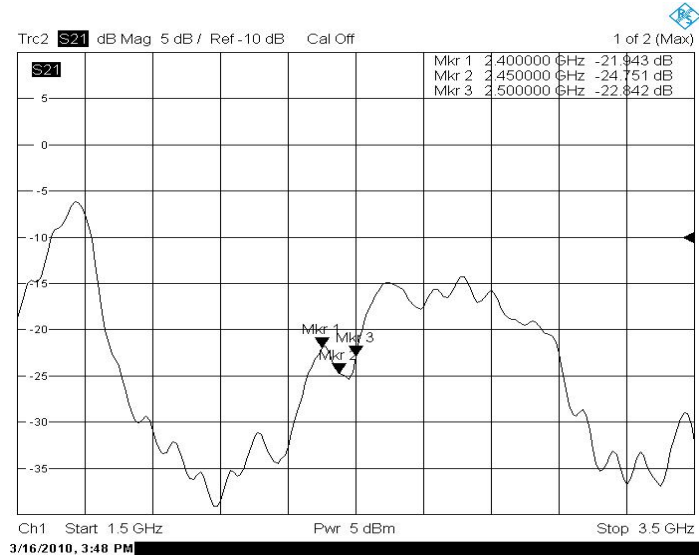


SWR





4.2 ISOLATION

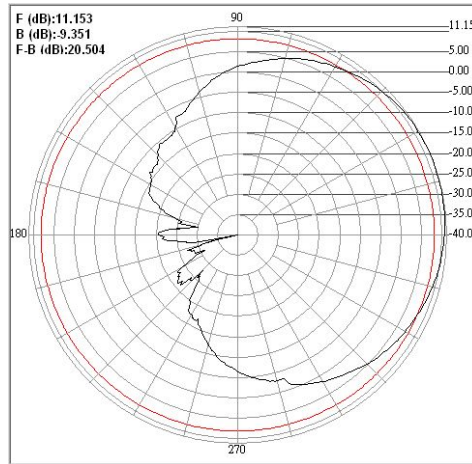




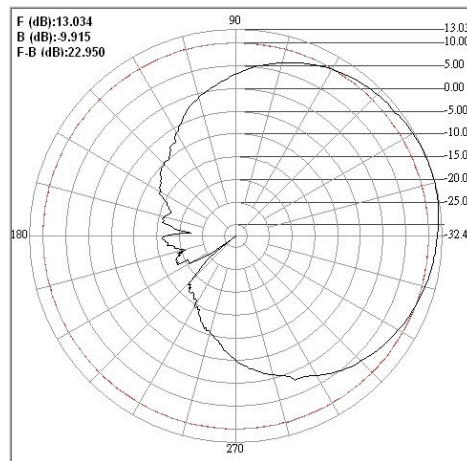
4.3 RADIATION PATTERN

+ 45° Polarization :

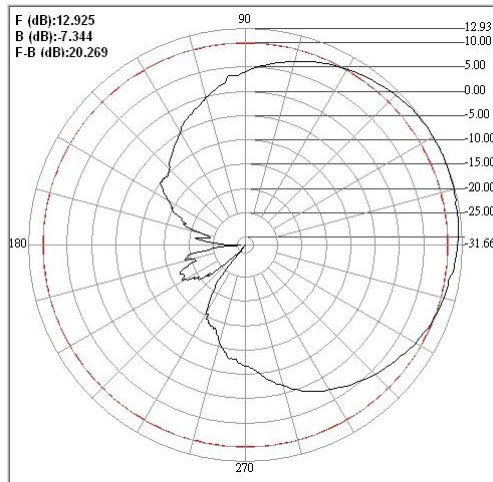
H-PLANE



Center freq.(MHz): 2400	Plane : H Plane	
Max gain(dBi) : 11.15	Min gain(dBi) : -40.00	Avg gain(dBi) : 5.50
-3dB1(°) : 57.30	-3dB2(°) : -24.90	HPB(°) : 82.20
Front (dB) : 11.153	Back (dB) : -9.351	F B Ratio (dB) : 20.504



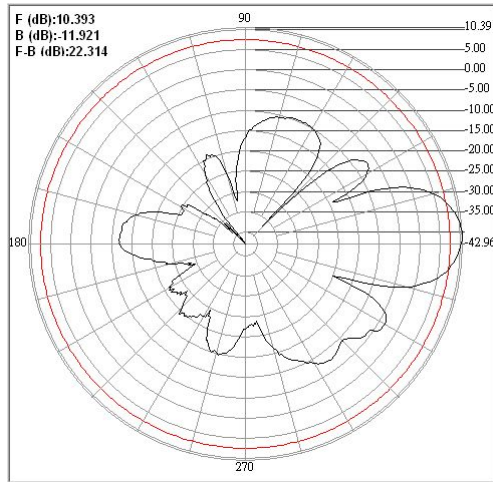
Center freq.(MHz): 2450	Plane : H Plane	
Max gain(dBi) : 13.03	Min gain(dBi) : -32.45	Avg gain(dBi) : 7.18
-3dB1(°) : 59.40	-3dB2(°) : -21.80	HPB(°) : 81.20
Front (dB) : 13.034	Back (dB) : -9.915	F B Ratio (dB) : 22.950



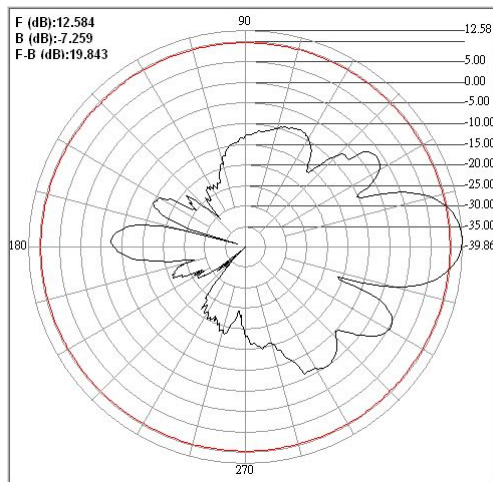
Center freq.(MHz): 2500	Plane : H Plane	
Max gain(dBi) : 12.93	Min gain(dBi) : -31.66	Avg gain(dBi) : 7.23
-3dB1(°) : 61.90	-3dB2(°) : -21.70	HPB(°) : 83.60
Front (dB) : 12.925	Back (dB) : -7.344	F B Ratio (dB) : 20.269



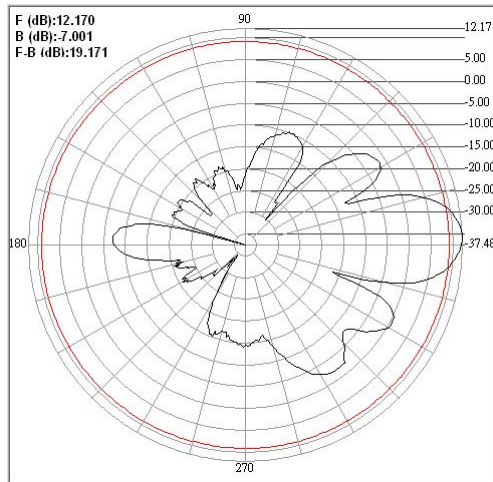
E-PLANE



Center freq.(MHz): 2400	Plane : E Plane	
Max gain(dBi) : 10.39	Min gain(dBi) : -42.96	Avg gain(dBi) : 0.11
-3dB1(°) : 12.20	-3dB2(°) : -7.90	HPB(°) : 20.10
Front (dB) : 10.393	Back (dB) : -11.921	F B Ratio (dB) : 22.314



Center freq.(MHz): 2450	Plane : E Plane	
Max gain(dBi) : 12.58	Min gain(dBi) : -39.86	Avg gain(dBi) : 2.30
-3dB1(°) : 12.50	-3dB2(°) : -7.40	HPB(°) : 19.90
Front (dB) : 12.584	Back (dB) : -7.259	F B Ratio (dB) : 19.843

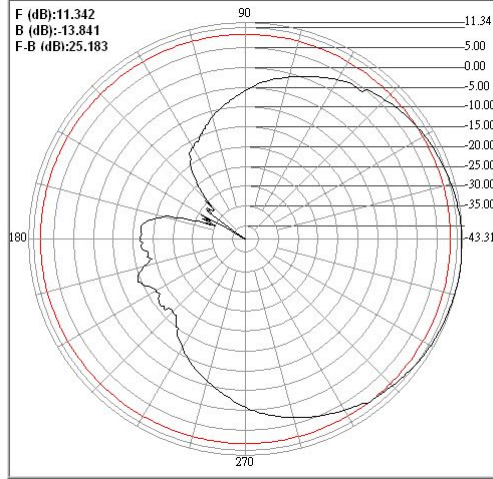


Center freq.(MHz): 2500	Plane : E Plane	
Max gain(dBi) : 12.17	Min gain(dBi) : -37.48	Avg gain(dBi) : 1.48
-3dB1(°) : 11.20	-3dB2(°) : -6.80	HPB(°) : 18.00
Front (dB) : 12.170	Back (dB) : -7.001	F B Ratio (dB) : 19.171

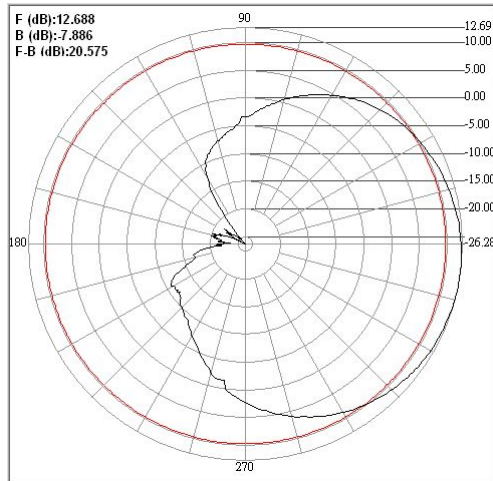


- 45° Polarization:

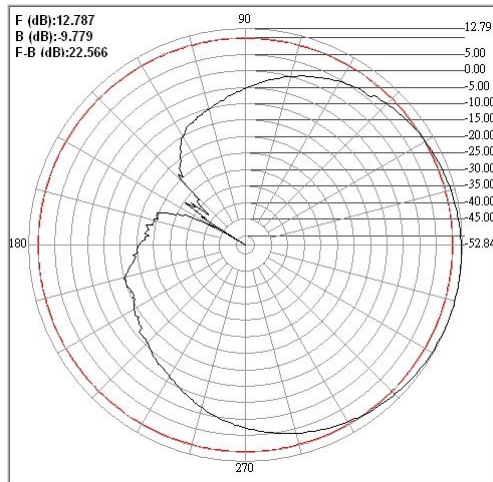
H-PLANE



Center freq.(MHz): 2400	Plane : H Plane	
Max gain(dBi) : 11.34	Min gain(dBi) : -43.31	Avg gain(dBi) : 5.72
-3dB1(°) : 393.60	-3dB2(°) : 305.60	HPB(°) : 88.00
Front (dB) : 11.342	Back (dB) : -13.841	F B Ratio (dB) : 25.183



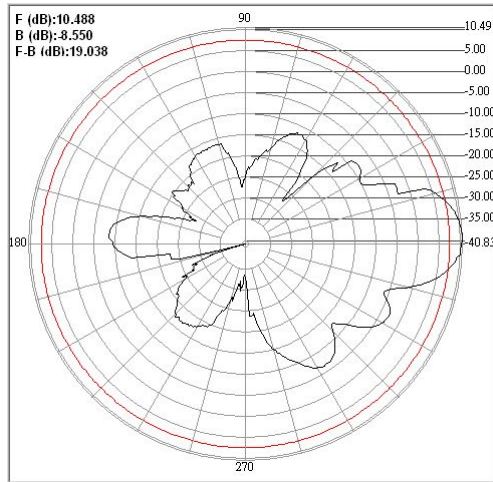
Center freq.(MHz): 2450	Plane : H Plane	
Max gain(dBi) : 12.69	Min gain(dBi) : -26.28	Avg gain(dBi) : 7.23
-3dB1(°) : 394.20	-3dB2(°) : 305.20	HPB(°) : 89.00
Front (dB) : 12.688	Back (dB) : -7.886	F B Ratio (dB) : 20.575



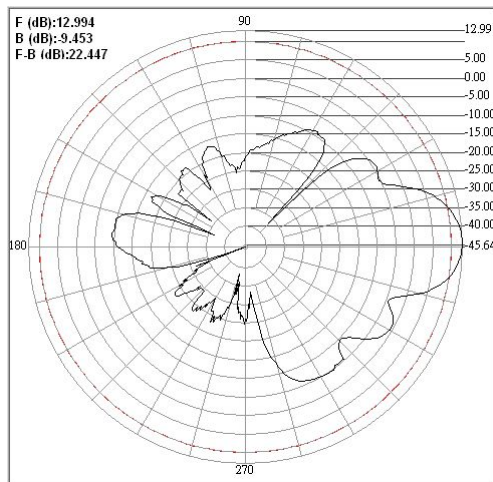
Center freq.(MHz): 2500	Plane : H Plane	
Max gain(dBi) : 12.79	Min gain(dBi) : -52.84	Avg gain(dBi) : 7.21
-3dB1(°) : 392.90	-3dB2(°) : 302.80	HPB(°) : 90.10
Front (dB) : 12.787	Back (dB) : -9.779	F B Ratio (dB) : 22.566



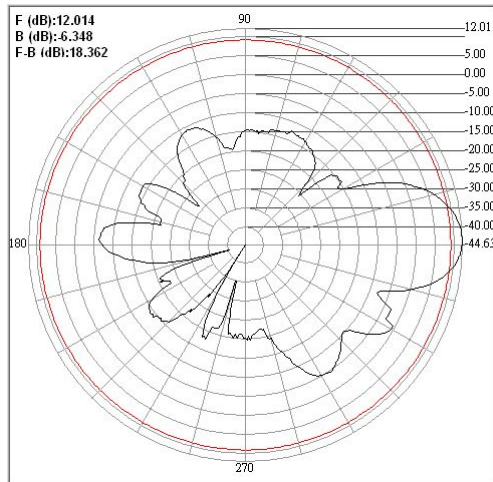
E-PLANE



Center freq.(MHz): 2400	Plane : E Plane	
Max gain(dBi) : 10.49	Min gain(dBi) : -40.83	Avg gain(dBi) : 0.35
-3dB1(°) : 12.40	-3dB2(°) : -7.40	HPB(°) : 19.80
Front (dB) : 10.488	Back (dB) : -8.550	F B Ratio (dB) : 19.038



Center freq.(MHz): 2450	Plane : E Plane	
Max gain(dBi) : 12.99	Min gain(dBi) : -45.64	Avg gain(dBi) : 2.83
-3dB1(°) : 12.20	-3dB2(°) : -8.70	HPB(°) : 20.90
Front (dB) : 12.994	Back (dB) : -9.453	F B Ratio (dB) : 22.447



Center freq.(MHz): 2500	Plane : E Plane	
Max gain(dBi) : 12.01	Min gain(dBi) : -44.63	Avg gain(dBi) : 1.82
-3dB1(°) : 11.40	-3dB2(°) : -7.70	HPB(°) : 19.10
Front (dB) : 12.014	Back (dB) : -6.348	F B Ratio (dB) : 18.362