

DATA SHEET

Model No. : ANT50-D0812PC
Description : 2.4-2.5GHz / 5.1-5.9 GHz
Dual Polarization Omni Antenna
Date : 2015/05/01
Rev : 2

1. OVERVIEW & SPECIFICATIONS

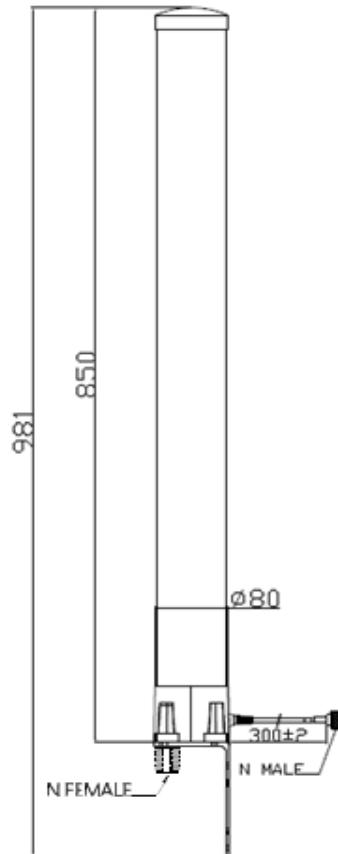


Electrical Specifications:

Frequency Range	2.4~2.5/5.1~5.9GHz
VSWR	≤ 2.0
Gain	6 / 8dBi
Impedance	50Ω
Polarization	Linear Vertical and Horizontal (±90°)
Beamwidth	
Port1(V)-N Female	H/E Plane
2.4~2.5GHz	360°/13°
5.1~5.9GHz	360°/10°
Port 2(H)-N MALE	H/E Plane
2.4~2.5GHz	77°/360°
5.1~5.9GHz	53°/360°
Max. Power	50 Watt
Isolation	≤ - 20 dB

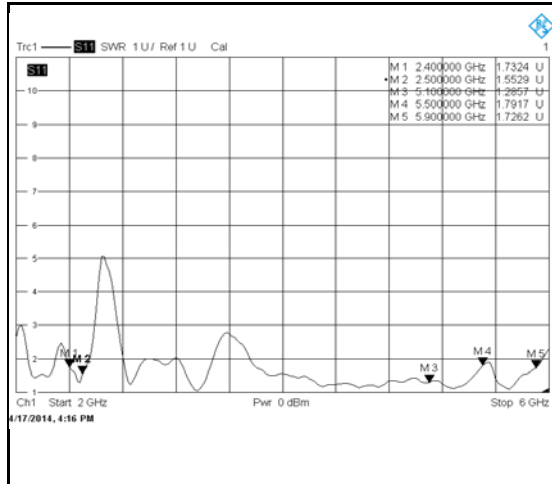
Mechanical Specifications:

Connector	Port 1: N FEMALE Port 2: N MALE
Cable	Port 1:NA Port 2:CDF-200 BLACK
Operation Temp.	-30°C ~ +60°C
Material-Radome	ABS
Dimension (L*W*H)	80*850mm ±5mm
Weight	880g ± 5g
RoHS compliant	Yes



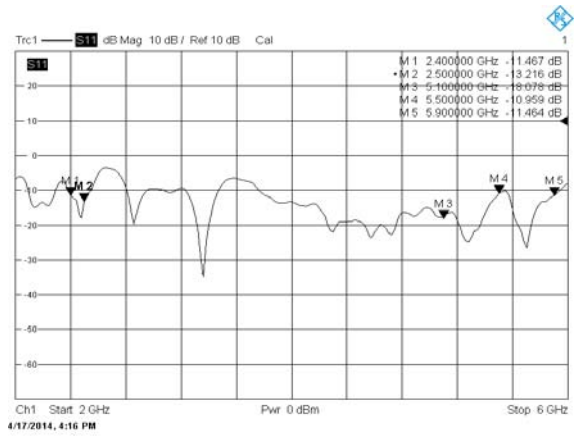
VSWR

Port 1 Vertical



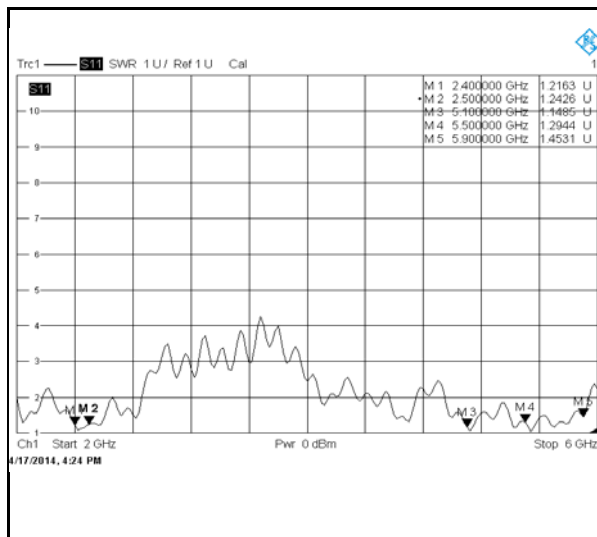
S11

Port1 Vertical



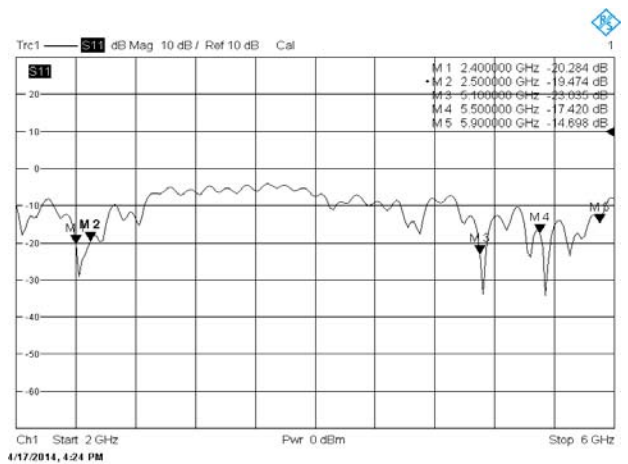
VSWR

Port 2 Horizontal



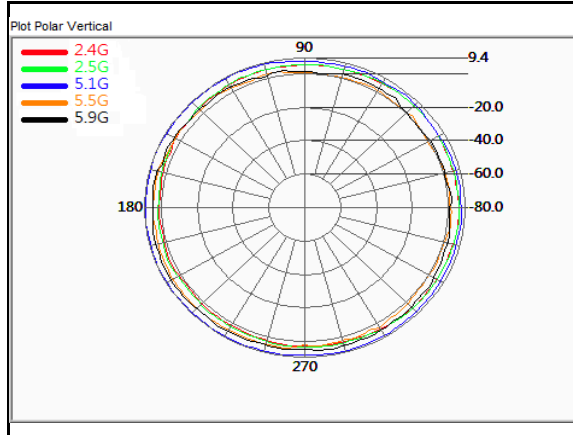
S11

Port 2 Horizontal

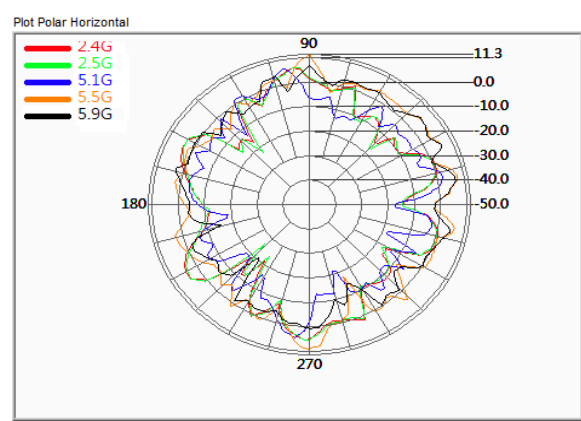


Radiation Pattern

Port 1 Vertical / H Plane

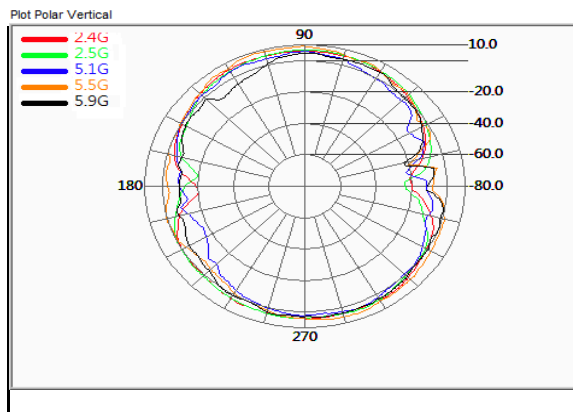


Port 1 Vertical / E Plane



Radiation Pattern

Port 2 Horizontal / H Plane



Port 2 Horizontal / E Plane

