

High-Gain Panel Directional Antenna

Preliminary

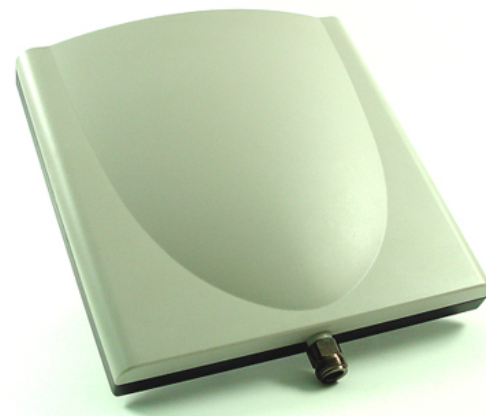
for 2.4 / 4.9 / 5.25 / 5.6 / 5.8 GHz

0.3

ANT50-D1600

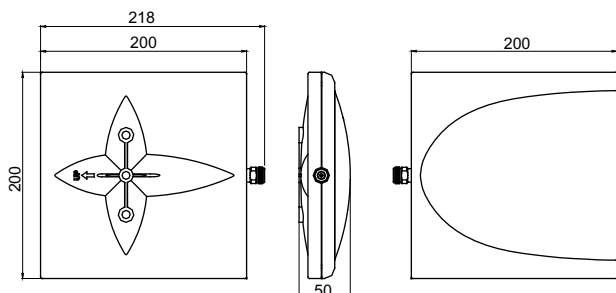
Electrical Specification

Frequency range	2400 MHz - 2500 MHz	4900 MHz - 5875 MHz
Gain	13.5dBi	15.5 dBi
VSWR	2.0 : 1 Max.	2.0 : 1 Max.
Polarization	Linear, vertical	Linear, vertical
HPBW / vertical	30°	15°
HPBW / horizontal	30°	15°
Front to back ratio	15 dB	
Downtilt	0°	
Power handling	10 W (cw)	
Impedance	50 Ohms	
Connector	N Jack	

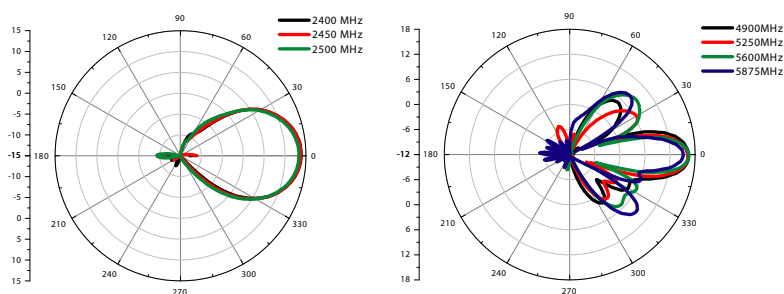


Environmental & Mechanical Characteristics

Survival wind speed	216 km/hr
Temperature	- 40° C to +80° C
Humidity	95% @ 25° C
Radome color	Light gray
Radome material	ABS, UV resistant
Weight	407 gw
Dimensions	200 x 218 x 50 mm



V-Plane Co-polarization Pattern



H-Plane Co-polarization Pattern

