

Long Distance, High Bandwidth

KW8300 Series P2MP MIMO WiTDM® Outdoor Bridge

250Mbps @15Km / 160Mbps @30Km / 70Mbps @70Km
4.8~6.2GHz

MIMO WiTDM Wireless Broadband product line are adopting Wireless TDMA concept to provide an affordable and reliable rural connectivity. All of products are high-performance outdoor-deployable wireless bridge that provides wireless connectivity between multiple network

locations. With the high throughput and long-distance transmission, it is the appropriate backhaul solution for Carriers, Service Providers and Enterprises.

Key Features & Benefits

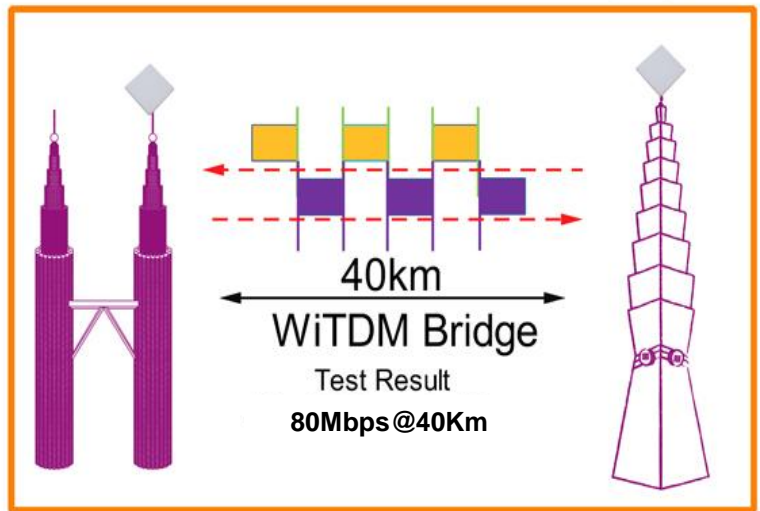
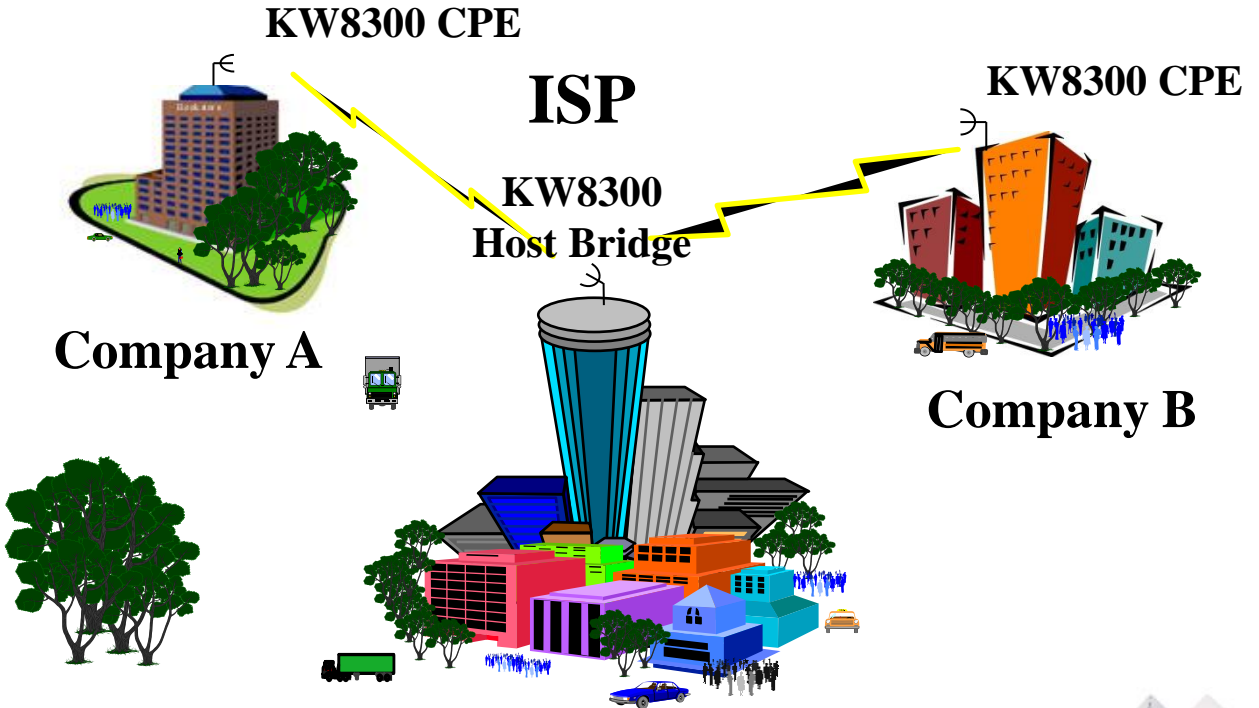
- Anti-Interference
 - IP68 Qualified / Reliable Outdoor Enclosure
 - Waterproof
 - Vent design
 - TDD Symmetric Access
 - Fast ARQ / AIS Support
 - Good Balance on low Cost and High Performance
 - Actual reachable testing range > 50 km
 - High throughput (Up to 250Mbps)
 - Low Latency (<1ms)
 - Support point to point , point to multi point
 - Network Topology MAP
 - High security (AES 128 bit)
 - Ease of Installation (Real time Link Test for Local and Remote RSSI)
 - IGMP Snooping Support
 - Transmit Power Control
 - Bandwidth Control
(5MHz, 10MHz, 15MHz, 30MHz, 52MHz)
 - Wireless TDMA (TDD Mode)
 - On-Board GPS Support (Option)
 - Extra Channel Bandwidth Selection – 6 / 7 / 8 / 12 / 14 MHz (Option)
- KW8300 R1 (Single Radio), KW8300 R2 (Dual Radios)

WiTDM®

TOUCH AND CONNECT!™



WNet
Green Network™



TOUCH AND CONNECT!™



WiNet
 Green Network™


WiVIEW 2, Managed Tool

WiVIEW 2011 - Bridge Vision

File Bridge Map Log Alarm About

No	Status	Model Name	IP Address	Location	Routing	Description
1	●	KWA-O1850-I	192.168.3.1		192.168.3.2	WIFDD
2	●	KWA-O1850-I	192.168.3.2		192.168.3.1	WIFDD
3	●	KWA-O1850-I	192.168.3.3		192.168.3.4	WIFDD
4	●	KWA-O1850-I	192.168.3.4		192.168.3.3	WIFDD
5	●	KWA-O8800-I	192.168.3.5		192.168.3.6	WIFDD
6	●	KWA-O8800-I	192.168.3.6		192.168.3.5	WIFDD
7	●	KWG-O6020-I	192.168.3.7		192.168.3.8	WIFDD
8	●	KWA-O6020-I	192.168.3.8		192.168.3.7	WIFDD
9	●	KWA-O6020-I	192.168.3.9		192.168.3.10	WIFDD
10	●	KWA-O670R	192.168.3.10		192.168.3.9	WIFDD

Map

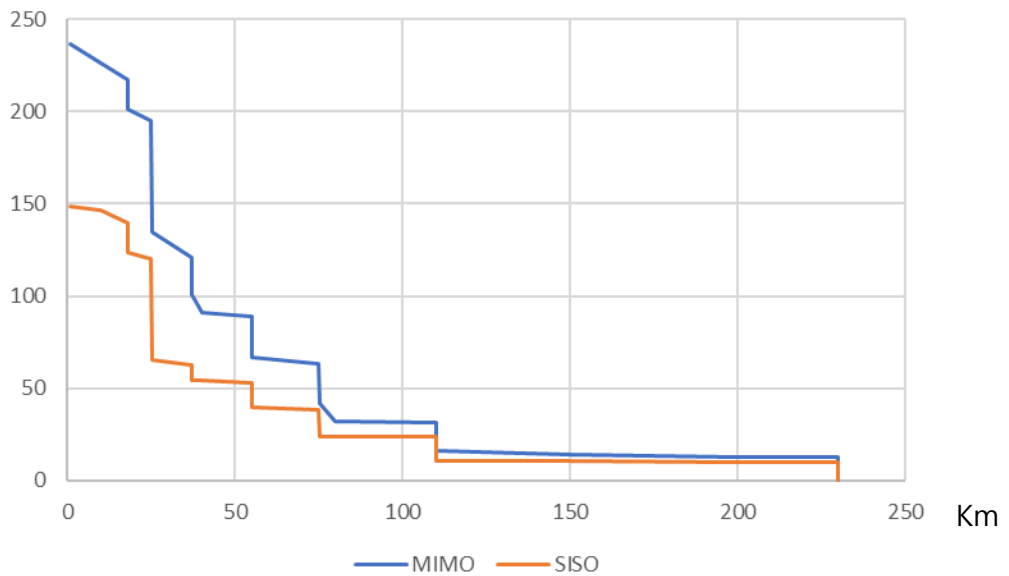


Model Icon

- KWA-O1850-I
- KWA-O6020-I
- KWA-O670R
- KWA-O8800-I
- KWG-O6020-I

Bridge Location on the MAP

Throughput
Mbps



TOUCH AND CONNECT!™

WNet
Green Network™



KW50-O8300 R1
KW50-O8300 R2
KW50-O8200-15



KW50-O8200-I

HARDWARE	
LAN	1 x 10/100/1000 BaseT RJ-45 with Auto-MDIX
Power Over Ethernet (PoE)	Yes (802.3af/at)
Default Button	Yes
Enclosure	Metal Case, IP68
Surge Protect	Surge Voltage 6KV / Discharge Current 5KA / Response Time < 5ns Standard: IEC64000-4-5
Power Consumption	5W (R1) / 6W (R2)
FEATURE	
Operating Mode	Bridge (P2P / P2MP)
Link Test Tool	Yes (Real Time Local and Remote RSSI)
Radio Bandwidth	5MHz, 10MHz, 15MHz, 30MHz, 52MHz
TDMA	Yes
TDM Coordination	Yes
QoS	TDD / 802.1P
Channel Selection	Yes
Auto Channel	Yes
DFS/TPC	Yes
Spanning Tree (STP)	Yes
VLAN	Yes (802.1Q)
GPS Coordinates	Yes
GPS	Yes (Option)
Space In Meters	Yes
NTP Client	Yes
CLI	Yes (SSH)
Backup / Restore	Yes
System Log	Yes
1+1 Hot Standby Backup	Yes (KW50-O8300 R2)
Dual Firmware Image	Yes (Redundant)
Performance	150,000 pps
Remote Log Server	Yes
SECURITY	
Encryption	AES 128bit
MANAGEMENT	
Web Base Management	Yes
SNMP	V2, V3 Private MIB, 802.11 MIB
Windows Tool	Yes, WiVIEW 2
Information	Device name, IP address, MAC address, Frequency, RSSI
PHYSICAL	
Operating Temperature	-30 ~ 80C
Operating Humidity	10 ~ 95% RH

Model	Antenna dBi	Output Power dBm	Sensitivity dBm	Dimension mm	Weight Kg
KW50-O8300 R1	2x N Jack	26	-95	259 x 250 x 75	1.8
KW50-O8200-I	2x2 20 dBi	26	-95	380 x 380 x 90	3.0
KW50-O8200-15	2x2 15 dBi	26	-95	259 x 250 x 75	2.0
KW50-O8300 R2	4x N Jack	26 / 26	-95 / -95	259 x 250 x 75	1.9

Modulation	BPSK			QPSK		16QAM		64QAM		
FEC (Forward Error Correction)	1/2	1/2	3/4	1/2	3/4	2/3	3/4	5/6		
Throughput @5MHz Mbps	1	2	3	10	15	20	23	25		
Throughput @10MHz Mbps	2	5	7	21	31	43	48	53		
Throughput @15MHz Mbps	3	7	11	30	45	59	65	70		
Throughput @30MHz Mbps	7	16	24	74	108	137	145	164		
Throughput @52MHz Mbps	11	23	37	112	163	205	218	249		
Sensitivity @ 15MHz dBm	-90	-89	-87	-84	-81	-78	-76	-74		
Output Power @ 15MHz dBm	26	25	25	24	24	23	23	23		

Customized Frequency

300MHz / 400MHz / 700MHz / 900MHz / 1.8~1.9GHz / 2.2~2.3GHz / 2.3~2.5GHz / 3.3~3.4GHz / 4.4~4.9GHz /

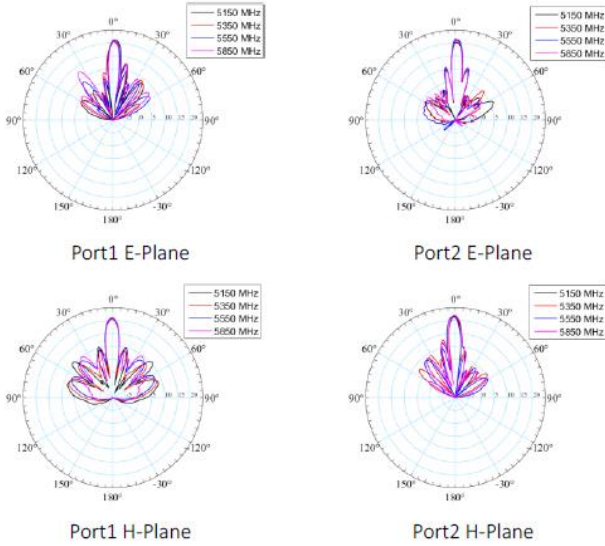
WiTDM®

TOUCH AND CONNECT!™

WNet
Green Network™

Spec of Build-in Antenna – KW50-O8200-I

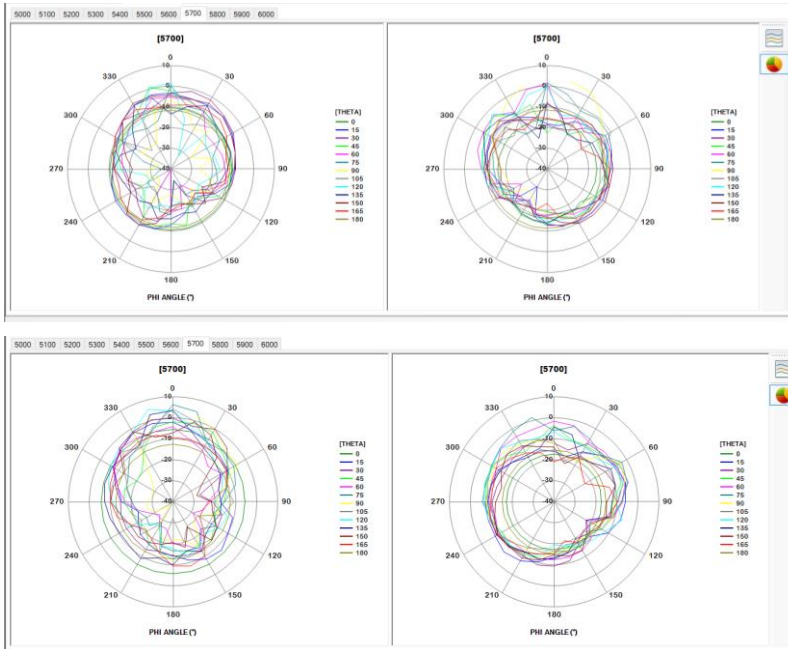
Radiation Patterns



KW50-O8200-I

Frequency : 5150-5850 MHz
 Gain : 20dBi
 VSWR : <2.0
 Beamwidth /H : 9°
 Beamwidth /V : 9°
 Polarization : Dual Linear; V&H
 Impedance : 50 ohms

Spec of Build-in Antenna – KW50-O8200-15



KW50-O8200-15

Frequency : 5000-6000 MHz
 Gain : 13~15dBi
 VSWR : <2.0
 Beamwidth /H : 45°
 Beamwidth /V : 45°
 Polarization : Dual Linear; V&H
 Impedance : 50 ohms