

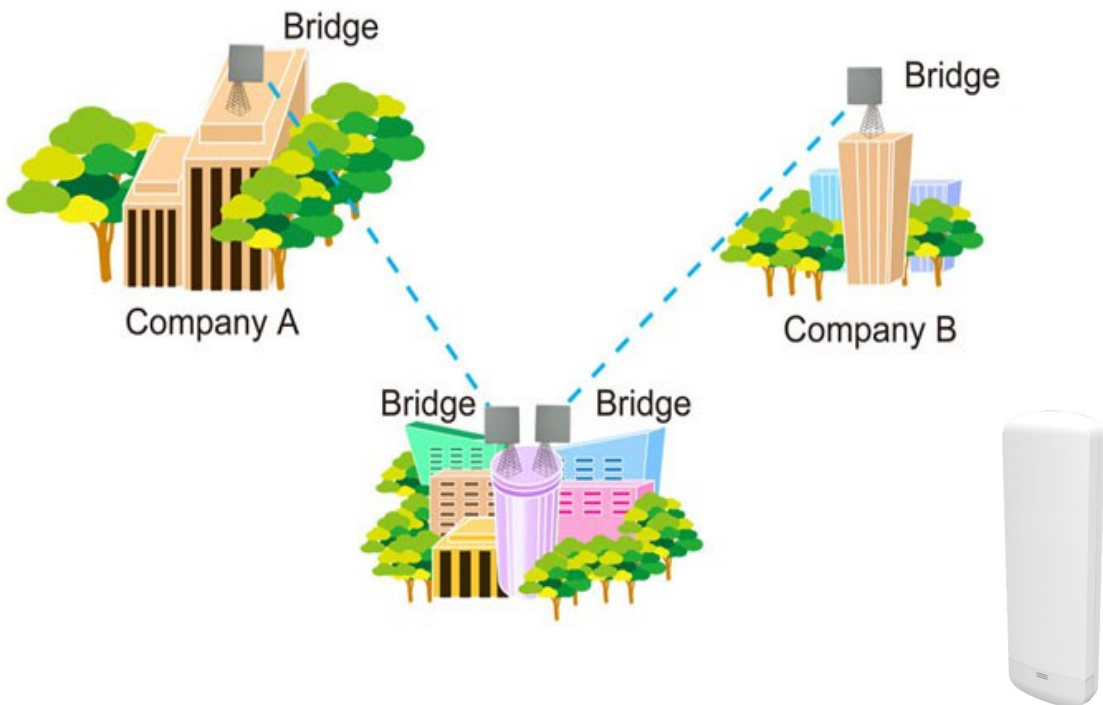
## KWA-O6070AC MIMO 833Mbps Outdoor Bridge 5 GHz

Formosa KWA-O6070AC 802.11ac Wireless MIMO Bridge provides reliable and predictable Wireless Bridge Connection or Wi-Fi Coverage.

With these wireless access points you can:

- Augment throughput for high-bandwidth wireless applications
- Protect your investment in wireless networking
- Increase network reliability for high bandwidth applications

- Data rates of 833 Mbps
- Multiple input, multiple output technology for enhanced reliability
- 5GHz radio module

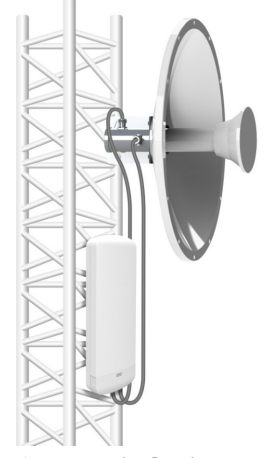


TOUCH AND CONNECT!™

WNet  
Green Network™

## WiVIEW 2, Managed Tool

No	Status	Model Name	IP Address	Location	Routing	Description
1	●	KWA-O1850-I	192.168.3.1		192.168.3.2	WIFDD
2	●	KWA-O1850-I	192.168.3.2		192.168.3.1	WIFDD
3	●	KWA-O1850-I	192.168.3.3		192.168.3.4	WIFDD
4	●	KWA-O1850-I	192.168.3.4		192.168.3.3	WIFDD
5	●	KWA-O8800-I	192.168.3.5		192.168.3.6	WITDM
6	●	KWA-O8800-I	192.168.3.6		192.168.3.5	WITDM
7	●	KWG-O6020-I	192.168.3.7		192.168.3.10	BGN_AP
8	●	KWA-O6020-I	192.168.3.8		192.168.3.9	Bridge
9	●	KWA-O6020-I	192.168.3.9		192.168.3.8	Bridge
10	●	KWA-O670R	192.168.3.10		192.168.3.7	BGN_Repeater



Antenna is Optional



Bridge Location on the MAP

## Specifications

Chipset	RTL8197D + RTL8812AR	Operation Mode	AP / Router Bridge Client
Standard	IEEE 802.11ac		
Frequency	5.15GHz ~ 5.825GHz		
Flash/SDRAM	16 M / 64 M	Security	64/128bit WEP WPA(TKIP with IEEE 802.1x) WPA2(AES with IEEE 802.1x) WPA Mixed 802.1x authentication
LAN/WAN Speed	10/100/1000Mbps (Gigabit)		
Antenna Connector	2x RP-SMA female connector		
Channel Width	20 / 40 / 80M	Operation Temperature	-30°C ~ 60°C
Data Rate	802.11a: up to 54Mbps 802.11n: up to 300Mbps 802.11ac: up to 833Mbps	Storage Humidity	10% ~ 90% (Non- condensing)
LED Indicated	Signal, WAN, LAN, WLAN	Dimension(mm)	300 x 80 x 30 mm
Power requirement	PoE: 24V Passive PoE	Weight	0.4kg

## RF Specifications [ Tolerance ± 2dB ]

Data Rate	TX	RX
11ac VHT20/40/80 MCS9	24/24/24	-63/-60/-57
11ac VHT20/40/80 MCS8	24/24/24	-64/-62/-60
11ac VHT20/40/80 MCS7	24/24/24	-70/-67/-64
11ac VHT20/40/80 MCS6	25/25/24	-71/-68/-65
11ac VHT20/40/80 MCS5	25/25/24	-72/-69/-66
11ac VHT20/40/80 MCS4	26/26/24	-76/-73/-70
11ac VHT20/40/80 MCS3	27/27/24	-80/-77/-74
11ac VHT20/40/80 MCS2	27/27/24	-83/-80/-77
11ac VHT20/40/80 MCS1	28/28/24	-85/-82/-79
11ac VHT20/40/80 MCS0	28/28/24	-88/-85/-82
11a 54M	25	-71
11a 48M	26	-72
11a 36M	27	-76
11a 24M	28	-80
11a 18M	28	-83
11a 12M	28	-85
11a 9M	28	-87
11a 6M	28	-88