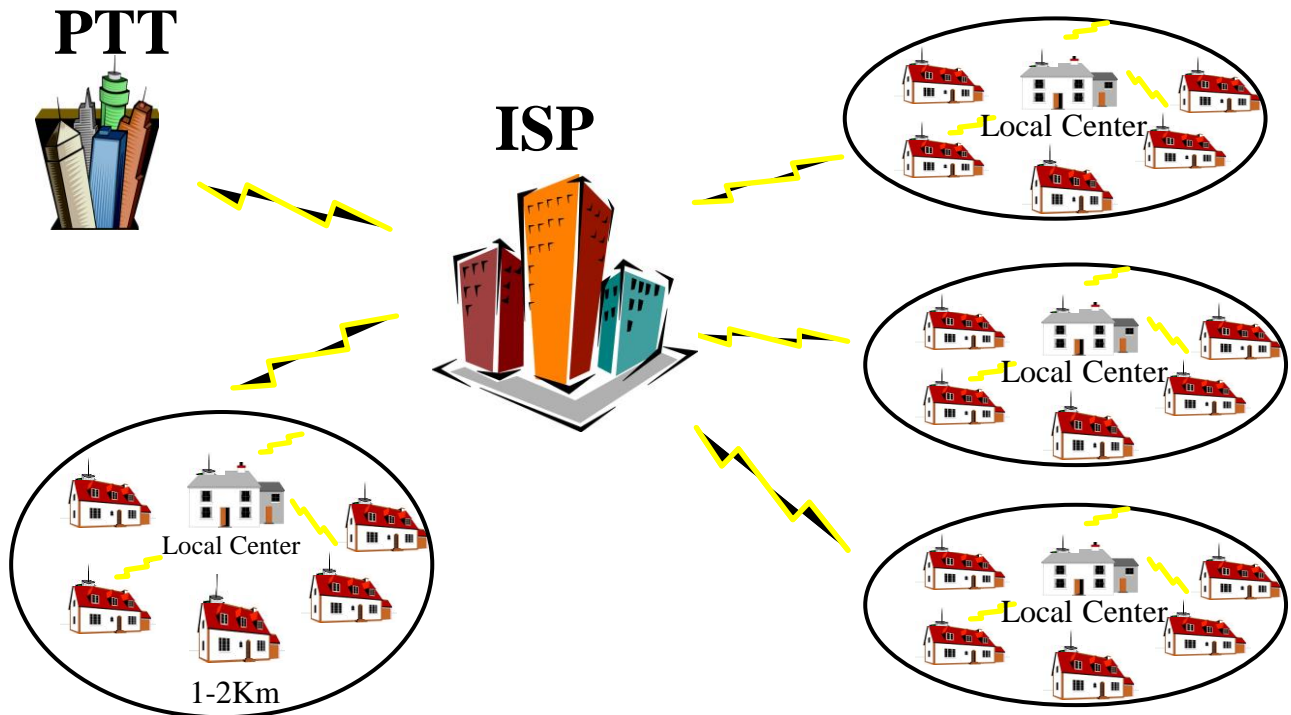


# KWG-O6031 MIMO 300Mbps Outdoor Bridge 2.4GHz

Formosa KWG-O6031 Wireless 2x2 MIMO Bridge provides reliable and predictable Wireless Bridge Connection or Wi-Fi Coverage. With these wireless access points you can:

- Augment throughput for high-bandwidth wireless applications
- Protect your investment in wireless networking
- Increase network reliability for high bandwidth applications

Data rates of 300 Mbps  
Multiple input, multiple output technology for enhanced reliability  
2.4GHz radio module

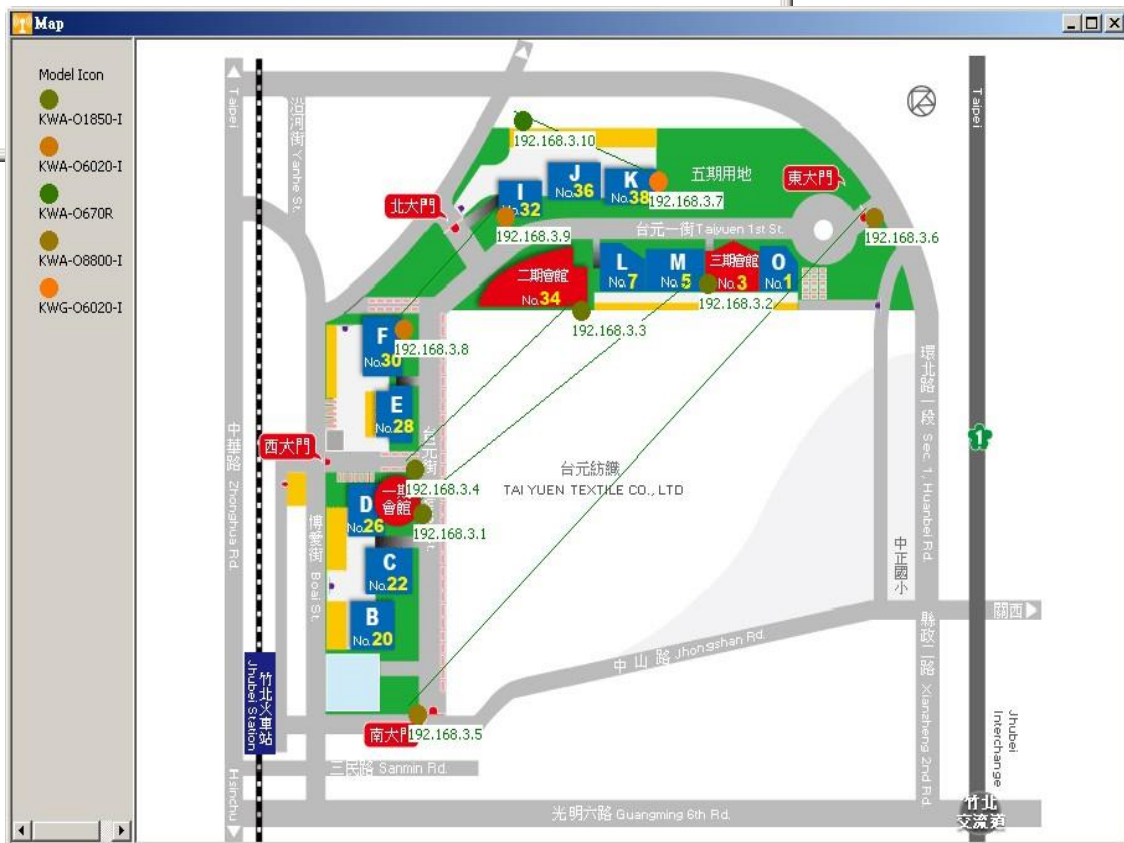


TOUCH AND CONNECT!™

WNet  
Green Network™

## WiVIEW 2, Managed Tool

No	Status	Model Name	IP Address	Location	Routing	Description
1	●	KWA-O1850-I	192.168.3.1		192.168.3.2	WIFDD
2	●	KWA-O1850-I	192.168.3.2		192.168.3.1	WIFDD
3	●	KWA-O1850-I	192.168.3.3		192.168.3.4	WIFDD
4	●	KWA-O1850-I	192.168.3.4		192.168.3.3	WIFDD
5	●	KWA-O8800-I	192.168.3.5		192.168.3.6	WITDM
6	●	KWA-O8800-I	192.168.3.6		192.168.3.5	WITDM
7	●	KWG-O6020-I	192.168.3.7		192.168.3.10	BGN_AP
8	●	KWA-O6020-I	192.168.3.8		192.168.3.9	Bridge
9	●	KWA-O6020-I	192.168.3.9		192.168.3.8	Bridge
10	●	KWA-O670R	192.168.3.10		192.168.3.7	BGN_Repeater



Bridge Location on the MAP

<b>Specification</b>	
<b>HARDWARE</b>	
LAN	10/100BaseT RJ-45 with Auto-MDIX
Enclosure	Metal Case, IP 68 Verified
Default Button	Yes
LED	Power / RSSI / LAN
Ground	Yes
Surge Protection	Surge Voltage: 6KV (10/700uS) Discharge Current: 5KA (8/20uS) Response Time: <5ns Standard: IEC64000-4-5
Power Requirements	802.3af 48V PoE
<b>RADIO</b>	
Wireless	802.11 b/g/n OFDM / TDD
Output Power	30dBm@11Mbps / 26dBm@54Mbps / 25 dBm@HT20, HT40
Sensitivity	-90dBm@11Mbps / -76dBm@54Mbps / -73dBm@HT20 / -70dBm@HT40
Antenna	2 N Connectors
Receiver Adjacent Channel Rejection (ACR)	> 20 dB
Receiver Alternate Channel Rejection (ALCR)	> 40 dB
<b>FEATURE</b>	
Operating Mode	AP, Bridge, Repeater, CPE, Virtual AC
Channel Bandwidth	20 / 40 MHz
Data Bandwidth Control	Yes
Output Power Management	Yes (Full, Half, Quarter, Eighth, Min.)
Max. Client Setting	Yes
TDM Coordination	Yes
NAT	Yes
VLAN	Yes, Up to 8 VAP
IGMP Snooping	Yes
Channel Protection	Yes
Spanning Tree	Yes (802.1d)
RTS Threshold Setting	Yes (0-2,346)
Fragmentation Setting	Yes (256-2,346)
Beacon Interval Setting	Yes (20-1,000)
DTIM Interval Setting	Yes (1-255)

<b>SECURITY</b>	
MAC Control	Yes
WEP Encryption	64, 128, 152-bit
WPA / WPA2	Yes
Wireless Isolation	Yes
Hidden SSID	Yes
Firewall	Yes
VPN	VPN Pass-through (IPsec, L2TP, PPTP)
<b>MANAGEMENT</b>	
Managed AP Setting	Yes
Web Base Management	Yes
Windows Tool	WiVIEW 2
Console	Yes
SNMP	V1, V2C, V3
Support Time Server	Yes
Support Log Server	Yes
Ping Watchdog	Yes
Site Survey	Yes (Scan Tool)
<b>PHYSICAL</b>	
Operating Temperature	-20 ~ 80C
Operating Humidity	10 ~ 95% RH
Weight	1.8 Kg
Dimension	259 x 250 x 75 mm

